

DATASHEET

ZDHHC3 Rabbit Polyclonal Antibody

CAT. NO. APA18130

KEY FEATURES

Target	ZDHHC3	Source / Host	Rabbit
Reactivity	Human	Clonality	Polyclonal
Applications	WB	Conjugation	Unconjugated
Form / Buffer	Liquid in 0.42% Potassium phosphate, 0.87% Sodium chloride, pH 7.3, 30% glycerol, and 0.01% sodium azide.		Storage at -20°C

BACKGROUND

Golgi-localized palmitoyltransferase that catalyzes the addition of palmitate onto various protein substrates . Has no stringent fatty acid selectivity and in addition to palmitate can also transfer onto target proteins myristate from tetradecanoyl-CoA and stearate from octadecanoyl-CoA . Plays an important role in G protein-coupled receptor signaling pathways involving GNAQ and potentially other heterotrimeric G proteins by regulating their dynamic association with the plasma membrane . Palmitoylates ITGA6 and ITGB4, thereby regulating the alpha-6/beta-4 integrin localization, expression and function in cell adhesion to laminin . Plays a role in the TRAIL-activated apoptotic signaling pathway most probably through the palmitoylation and localization to the plasma membrane of TNFRSF10A .

APPLICATION

To ensure optimal assay performance, AREX recommends conducting reagent titration tailored to each testing system for optimal detection results.

WB	1:500 - 1:1000
----	----------------

*Results are sample-specific. Please refer to your local assay conditions and test parameters for reference.

PRODUCT OVERVIEW

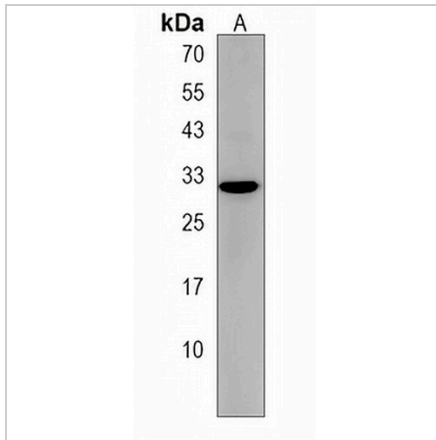
Description	Rabbit polyclonal antibody to ZDHHC3
Specificity	Recognizes endogenous levels of ZDHHC3 protein.
Antibody Type	Primary antibody
Immunogen	KLH-conjugated synthetic peptide encompassing a sequence within the N-terminal region of human ZDHHC3. The exact sequence is proprietary.
Purification	The antibody was purified by immunogen affinity chromatography.
Molecular Weight	Predicted: 34 kD; Observed: 30 kD
Form/Buffer	Liquid in 0.42% Potassium phosphate, 0.87% Sodium chloride, pH 7.3, 30% glycerol, and 0.01% sodium azide.
Alternative Names	ZNF373; Palmitoyltransferase ZDHHC3; Protein DHHC1; Zinc finger DHHC domain-containing protein 3; DHHC-3; Zinc finger protein 373
Gene Symbol	ZDHHC3
Entrez Gene	51304(Human)
SwissProt	Q9NYG2(Human)

*AREX continuously optimizes our products. Webpage content may not reflect the latest updates. For inquiries, please contact info@arexbio.com or your local distributor.

*Clone Number, Reactivity, Source/Host and Clonality can be found in the product name and Key Features section above.

DATASHEET**ZDHHC3 Rabbit Polyclonal Antibody**

CAT. NO. APA18130

DATA

Western blot analysis of ZDHHC3 expression in HepG2 (A) whole cell lysates. (Predicted band size: 34 kD; Observed band size: 30 kD)

STORAGE

Store at 4°C short term. For long term storage, store at -20°C, avoiding freeze/thaw cycles.

NOTE

For Research Use Only. Not for diagnostic, therapeutics, prophylactic or in vivo use.