

DATASHEET

KRT28 Rabbit Polyclonal Antibody

CAT. NO. APA18131

KEY FEATURES

Target	KRT28	Source / Host	Rabbit
Reactivity	Human	Clonality	Polyclonal
Applications	WB	Conjugation	Unconjugated
Form / Buffer	Liquid in 0.42% Potassium phosphate, 0.87% Sodium chloride, pH 7.3, 30% glycerol, and 0.01% sodium azide.		Storage at -20°C

BACKGROUND

Essential for the proper assembly of types I and II keratin protein complexes and the formation of keratin intermediate filaments in the inner root sheath (irs).

APPLICATION

To ensure optimal assay performance, AREX recommends conducting reagent titration tailored to each testing system for optimal detection results.

WB	1:500 - 1:1000
----	----------------

*Results are sample-specific. Please refer to your local assay conditions and test parameters for reference.

PRODUCT OVERVIEW

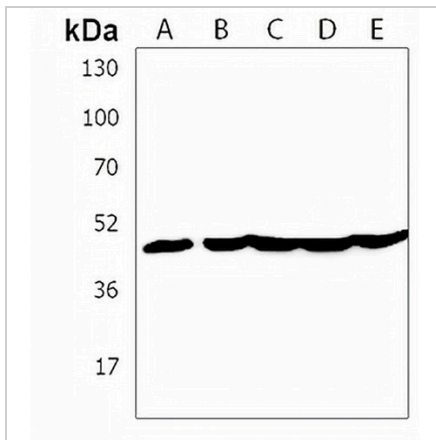
Description	Rabbit polyclonal antibody to KRT28
Specificity	Recognizes endogenous levels of KRT28 protein.
Antibody Type	Primary antibody
Immunogen	KLH-conjugated synthetic peptide encompassing a sequence within the C-terminal region of human KRT28. The exact sequence is proprietary.
Purification	The antibody was purified by immunogen affinity chromatography.
Molecular Weight	Predicted: 50 kD; Observed: 50 kD
Form/Buffer	Liquid in 0.42% Potassium phosphate, 0.87% Sodium chloride, pH 7.3, 30% glycerol, and 0.01% sodium azide.
Alternative Names	KRT25D; Keratin, type I cytoskeletal 28; Cytokeratin-28; CK-28; Keratin-25D; K25D; Keratin-28; K28; Type I inner root sheath-specific keratin-K25irs4
Gene Symbol	KRT28
Entrez Gene	162605(Human)
SwissProt	Q7Z3Y7(Human)

*AREX continuously optimizes our products. Webpage content may not reflect the latest updates. For inquiries, please contact info@arexbio.com or your local distributor.

*Clone Number, Reactivity, Source/Host and Clonality can be found in the product name and Key Features section above.

DATASHEET**KRT28 Rabbit Polyclonal Antibody**

CAT. NO. APA18131

DATA

Western blot analysis of KRT28 expression in HL60 (A), A431 (B), Jurkat (C), HeLa (D), A2058 (E) whole cell lysates. (Predicted band size: 50 kD; Observed band size: 50 kD)

STORAGE

Store at 4°C short term. For long term storage, store at -20°C, avoiding freeze/thaw cycles.

NOTE

For Research Use Only. Not for diagnostic, therapeutics, prophylactic or in vivo use.