

**DATASHEET**

**CLPTM1L Rabbit Polyclonal Antibody**

CAT. NO. APA18137

**KEY FEATURES**

Target	CLPTM1L	Source / Host	Rabbit
Reactivity	Human	Clonality	Polyclonal
Applications	WB	Conjugation	Unconjugated
Form / Buffer	Liquid in 0.42% Potassium phosphate, 0.87% Sodium chloride, pH 7.3, 30% glycerol, and 0.01% sodium azide.		Storage at-20°C

**BACKGROUND**

Scramblase that mediates the translocation of glucosaminylphosphatidylinositol (alpha-D-GlcN-(1-6)-(1,2-diacyl-sn-glycero-3-phospho)-1D-myo-inositol, GlcN-PI) across the endoplasmic reticulum (ER) membrane, from the cytosolic leaflet to the luminal leaflet of the ER membrane, where it participates in the biosynthesis of glycosylphosphatidylinositol (GPI) -(1,2-diacyl-sn-glycero-3-phospho)-1D-myo-inositol, GlcN-PI) across the endoplasmic reticulum (ER) membrane, from the cytosolic leaflet to the luminal leaflet of the ER membrane, where it participates in the biosynthesis of glycosylphosphatidylinositol (GPI) . GPI is a lipid glycoconjugate involved in post-translational modification of proteins .

**APPLICATION**

To ensure optimal assay performance, AREX recommends conducting reagent titration tailored to each testing system for optimal detection results.

WB	1:500 - 1:1000
----	----------------

\*Results are sample-specific. Please refer to your local assay conditions and test parameters for reference.

**PRODUCT OVERVIEW**

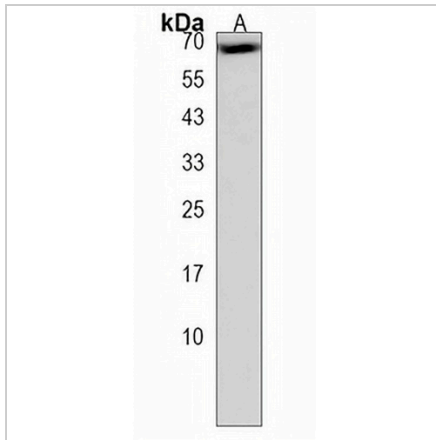
Description	Rabbit polyclonal antibody to CLPTM1L
Specificity	Recognizes endogenous levels of CLPTM1L protein.
Antibody Type	Primary antibody
Immunogen	KLH-conjugated synthetic peptide encompassing a sequence within the C-terminal region of human CLPTM1L. The exact sequence is proprietary.
Purification	The antibody was purified by immunogen affinity chromatography.
Molecular Weight	Predicted: 62 kD; Observed: 68 kD
Form/Buffer	Liquid in 0.42% Potassium phosphate, 0.87% Sodium chloride, pH 7.3, 30% glycerol, and 0.01% sodium azide.
Alternative Names	CRR9; Cleft lip and palate transmembrane protein 1-like protein; CLPTM1-like protein; Cisplatin resistance-related protein 9; CRR9p
Gene Symbol	CLPTM1L
Entrez Gene	81037(Human)
SwissProt	Q96KA5(Human)

\*AREX continuously optimizes our products. Webpage content may not reflect the latest updates. For inquiries, please contact [info@arexbio.com](mailto:info@arexbio.com) or your local distributor.

\*Clone Number, Reactivity, Source/Host and Clonality can be found in the product name and Key Features section above.

**DATASHEET****CLPTM1L Rabbit Polyclonal Antibody**

CAT. NO. APA18137

**DATA**

Western blot analysis of CLPTM1L expression in A549 (A) whole cell lysates. (Predicted band size: 62 kD; Observed band size: 68 kD)

**STORAGE**

Store at 4°C short term. For long term storage, store at -20°C, avoiding freeze/thaw cycles.

**NOTE**

For Research Use Only. Not for diagnostic, therapeutics, prophylactic or in vivo use.