

DATASHEET

AIM1L Rabbit Polyclonal Antibody

CAT. NO. APA18151

KEY FEATURES

| | | | |
|---------------|---|---------------|---------------------|
| Target | AIM1L | Source / Host | Rabbit |
| Reactivity | Human | Clonality | Polyclonal |
| Applications | WB | Conjugation | Unconjugated |
| Form / Buffer | Liquid in 0.42% Potassium phosphate, 0.87% Sodium chloride, pH 7.3, 30% glycerol, and 0.01% sodium azide. | | Storage at -20°C |

BACKGROUND

Beta/gamma crystallin domain-containing protein 2 (CRYBG2), also known as Absent in melanoma 1-like protein. Belongs to the beta/gamma-crystallin family

APPLICATION

To ensure optimal assay performance, AREX recommends conducting reagent titration tailored to each testing system for optimal detection results.

| | |
|----|----------------|
| WB | 1:500 - 1:1000 |
|----|----------------|

*Results are sample-specific. Please refer to your local assay conditions and test parameters for reference.

PRODUCT OVERVIEW

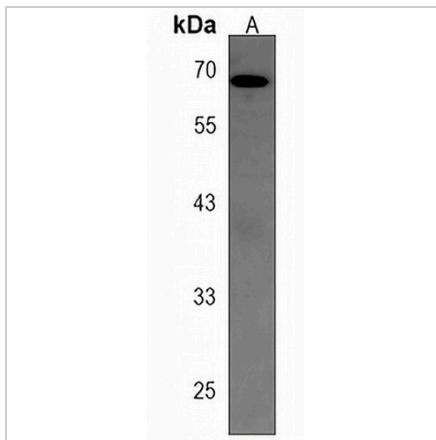
| | |
|-------------------|--|
| Description | Rabbit polyclonal antibody to AIM1L |
| Specificity | Recognizes endogenous levels of AIM1L protein. |
| Antibody Type | Primary antibody |
| Immunogen | KLH-conjugated synthetic peptide encompassing a sequence within the C-terminal region of human AIM1L. The exact sequence is proprietary. |
| Purification | The antibody was purified by immunogen affinity chromatography. |
| Molecular Weight | Predicted: 177 kD; Observed: 64 kD |
| Form/Buffer | Liquid in 0.42% Potassium phosphate, 0.87% Sodium chloride, pH 7.3, 30% glycerol, and 0.01% sodium azide. |
| Alternative Names | CRYBG2; Absent in melanoma 1-like protein; Beta/gamma crystallin domain-containing protein 2 |
| Gene Symbol | AIM1L |
| Entrez Gene | 55057(Human) |
| SwissProt | Q8N1P7(Human) |

*AREX continuously optimizes our products. Webpage content may not reflect the latest updates. For inquiries, please contact info@arexbio.com or your local distributor.

*Clone Number, Reactivity, Source/Host and Clonality can be found in the product name and Key Features section above.

DATASHEET**AIM1L Rabbit Polyclonal Antibody**

CAT. NO. APA18151

DATA

Western blot analysis of AIM1L expression in HL60 (A) whole cell lysates. (Predicted band size: 177 kD; Observed band size: 64 kD)

STORAGE

Store at 4°C short term. For long term storage, store at -20°C, avoiding freeze/thaw cycles.

NOTE

For Research Use Only. Not for diagnostic, therapeutics, prophylactic or in vivo use.