

DATASHEET

PKD2L1 Rabbit Polyclonal Antibody

CAT. NO. APA18160

KEY FEATURES

Target	PKD2L1	Source / Host	Rabbit
Reactivity	Human	Clonality	Polyclonal
Applications	WB	Conjugation	Unconjugated
Form / Buffer	Liquid in 0.42% Potassium phosphate, 0.87% Sodium chloride, pH 7.3, 30% glycerol, and 0.01% sodium azide.		Storage at -20°C

BACKGROUND

Homotetrameric, non-selective cation channel that is permeable to sodium, potassium, magnesium and calcium. Also forms functional heteromeric channels with PKD1, PKD1L1 and PKD1L3. Pore-forming subunit of a heterotetrameric, non-selective cation channel, formed by PKD1L2 and PKD1L3, that is permeable to sodium, potassium, magnesium and calcium and which may act as a sour taste receptor in gustatory cells; however, its contribution to sour taste perception is unclear in vivo and may be indirect. The homomeric and heteromeric channels formed by PKD1L2 and PKD1L3 are activated by low pH and Ca²⁺, but opens only when the extracellular pH rises again and after the removal of acid stimulus.

APPLICATION

To ensure optimal assay performance, AREX recommends conducting reagent titration tailored to each testing system for optimal detection results.

WB	1:500 - 1:1000
----	----------------

*Results are sample-specific. Please refer to your local assay conditions and test parameters for reference.

PRODUCT OVERVIEW

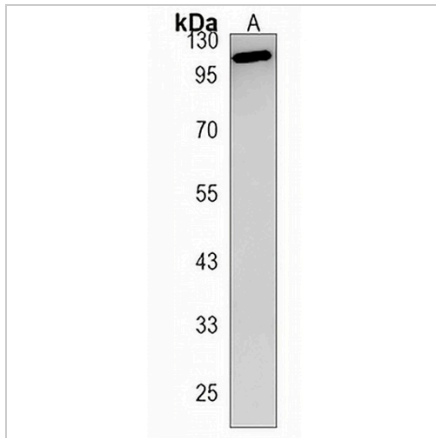
Description	Rabbit polyclonal antibody to PKD2L1
Specificity	Recognizes endogenous levels of PKD2L1 protein.
Antibody Type	Primary antibody
Immunogen	KLH-conjugated synthetic peptide encompassing a sequence within the N-terminal region of human PKD2L1. The exact sequence is proprietary.
Purification	The antibody was purified by immunogen affinity chromatography.
Molecular Weight	Predicted: 91 kD; Observed: 107 kD
Form/Buffer	Liquid in 0.42% Potassium phosphate, 0.87% Sodium chloride, pH 7.3, 30% glycerol, and 0.01% sodium azide.
Alternative Names	PKD2L; PKDL; TRPP3; Polycystic kidney disease 2-like 1 protein; Polycystin-2 homolog; Polycystin-2L1; Polycystin-L; Polycystin-L1
Gene Symbol	PKD2L1
Entrez Gene	9033(Human)
SwissProt	Q9P0L9(Human)

*AREX continuously optimizes our products. Webpage content may not reflect the latest updates. For inquiries, please contact info@arexbio.com or your local distributor.

*Clone Number, Reactivity, Source/Host and Clonality can be found in the product name and Key Features section above.

DATASHEET**PKD2L1 Rabbit Polyclonal Antibody**

CAT. NO. APA18160

DATA

Western blot analysis of PKD2L1 expression in CEM (A) whole cell lysates. (Predicted band size: 91 kD; Observed band size: 107 kD)

STORAGE

Store at 4°C short term. For long term storage, store at -20°C, avoiding freeze/thaw cycles.

NOTE

For Research Use Only. Not for diagnostic, therapeutics, prophylactic or in vivo use.