

DATASHEET

GRHL3 Rabbit Polyclonal Antibody

CAT. NO. APA18173

KEY FEATURES

Target	GRHL3	Source / Host	Rabbit
Reactivity	Human	Clonality	Polyclonal
Applications	WB	Conjugation	Unconjugated
Form / Buffer	Liquid in 0.42% Potassium phosphate, 0.87% Sodium chloride, pH 7.3, 30% glycerol, and 0.01% sodium azide.		Storage at -20°C

BACKGROUND

Transcription factor playing important roles in primary neurulation and in the differentiation of stratified epithelia of both ectodermal and endodermal origin. Binds directly to the consensus DNA sequence 5'-AACCGGT-3' acting as an activator and repressor on distinct target genes. Exhibits functional redundancy with GRHL2 in epidermal morphogenetic events and epidermal wound repair. Exhibits functional redundancy with GRHL2 in epidermal morphogenetic events and epidermal wound repair but is essential to form the epidermal barrier with TGM3 as critical direct target gene among others.

APPLICATION

To ensure optimal assay performance, AREX recommends conducting reagent titration tailored to each testing system for optimal detection results.

WB	1:500 - 1:1000
----	----------------

*Results are sample-specific. Please refer to your local assay conditions and test parameters for reference.

PRODUCT OVERVIEW

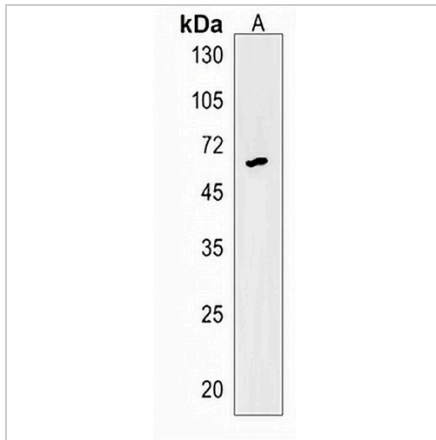
Description	Rabbit polyclonal antibody to GRHL3
Specificity	Recognizes endogenous levels of GRHL3 protein.
Antibody Type	Primary antibody
Immunogen	KLH-conjugated synthetic peptide encompassing a sequence within the N-terminal region of human GRHL3. The exact sequence is proprietary.
Purification	The antibody was purified by immunogen affinity chromatography.
Molecular Weight	Predicted: 70 kD; Observed: 70 kD
Form/Buffer	Liquid in 0.42% Potassium phosphate, 0.87% Sodium chloride, pH 7.3, 30% glycerol, and 0.01% sodium azide.
Alternative Names	SOM; TFCP2L4; Grainyhead-like protein 3 homolog; Sister of mammalian grainyhead; Transcription factor CP2-like 4
Gene Symbol	GRHL3
Entrez Gene	57822(Human)
SwissProt	Q8TE85(Human)

*AREX continuously optimizes our products. Webpage content may not reflect the latest updates. For inquiries, please contact info@arexbio.com or your local distributor.

*Clone Number, Reactivity, Source/Host and Clonality can be found in the product name and Key Features section above.

DATASHEET**GRHL3 Rabbit Polyclonal Antibody**

CAT. NO. APA18173

DATA

Western blot analysis of GRHL3 expression in human placenta (A) whole cell lysates.
(Predicted band size: 70 kD; Observed band size: 70 kD)

STORAGE

Store at 4°C short term. For long term storage, store at -20°C, avoiding freeze/thaw cycles.

NOTE

For Research Use Only. Not for diagnostic, therapeutics, prophylactic or in vivo use.