

**DATASHEET**

**PLEKHF1 Rabbit Polyclonal Antibody**

CAT. NO. APA18176

**KEY FEATURES**

Target	PLEKHF1	Source / Host	Rabbit
Reactivity	Human	Clonality	Polyclonal
Applications	WB	Conjugation	Unconjugated
Form / Buffer	Liquid in 0.42% Potassium phosphate, 0.87% Sodium chloride, pH 7.3, 30% glycerol, and 0.01% sodium azide.		Storage at -20°C

**BACKGROUND**

May induce apoptosis through the lysosomal-mitochondrial pathway. Translocates to the lysosome initiating the permeabilization of lysosomal membrane (LMP) and resulting in the release of CTSD and CTSB to the cytoplasm. Triggers the caspase-independent apoptosis by altering mitochondrial membrane permeabilization (MMP) resulting in the release of PDCD8.

**APPLICATION**

To ensure optimal assay performance, AREX recommends conducting reagent titration tailored to each testing system for optimal detection results.

WB	1:500 - 1:1000
----	----------------

\*Results are sample-specific. Please refer to your local assay conditions and test parameters for reference.

**PRODUCT OVERVIEW**

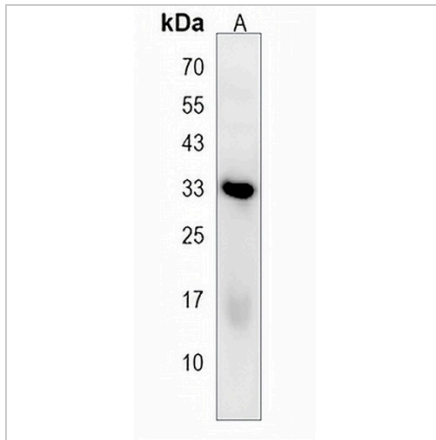
Description	Rabbit polyclonal antibody to PLEKHF1
Specificity	Recognizes endogenous levels of PLEKHF1 protein.
Antibody Type	Primary antibody
Immunogen	KLH-conjugated synthetic peptide encompassing a sequence within the N-terminal region of human PLEKHF1. The exact sequence is proprietary.
Purification	The antibody was purified by immunogen affinity chromatography.
Molecular Weight	Predicted: 31 kD; Observed: 34 kD
Form/Buffer	Liquid in 0.42% Potassium phosphate, 0.87% Sodium chloride, pH 7.3, 30% glycerol, and 0.01% sodium azide.
Alternative Names	APPD; LAPF; ZFYVE15; Pleckstrin homology domain-containing family F member 1; PH domain-containing family F member 1; Lysosome-associated apoptosis-inducing protein containing PH and FYVE domains; Apoptosis-inducing protein; PH and FYVE domain-containing protein 1; Phafin-1; Zinc finger FYVE domain-containing protein 15
Gene Symbol	PLEKHF1
Entrez Gene	79156(Human)
SwissProt	Q96S99(Human)

\*AREX continuously optimizes our products. Webpage content may not reflect the latest updates. For inquiries, please contact [info@arexbio.com](mailto:info@arexbio.com) or your local distributor.

\*Clone Number, Reactivity, Source/Host and Clonality can be found in the product name and Key Features section above.

**DATASHEET****PLEKHF1 Rabbit Polyclonal Antibody**

CAT. NO. APA18176

**DATA**

Western blot analysis of PLEKHF1 expression in human heart (A) whole cell lysates.  
(Predicted band size: 31 kD; Observed band size: 34 kD)

**STORAGE**

Store at 4°C short term. For long term storage, store at -20°C, avoiding freeze/thaw cycles.

**NOTE**

For Research Use Only. Not for diagnostic, therapeutics, prophylactic or in vivo use.