

DATASHEET

SYNGR2 Rabbit Polyclonal Antibody

CAT. NO. APA18185

KEY FEATURES

Target	SYNGR2	Source / Host	Rabbit
Reactivity	Human	Clonality	Polyclonal
Applications	WB	Conjugation	Unconjugated
Form / Buffer	Liquid in 0.42% Potassium phosphate, 0.87% Sodium chloride, pH 7.3, 30% glycerol, and 0.01% sodium azide.		Storage at -20°C

BACKGROUND

May play a role in regulated exocytosis. In neuronal cells, modulates the localization of synaptophysin/SYP into synaptic-like microvesicles and may therefore play a role in the formation and/or the maturation of this vesicles. May also play a role in GLUT4 storage and transport to the plasma membrane.

APPLICATION

To ensure optimal assay performance, AREX recommends conducting reagent titration tailored to each testing system for optimal detection results.

WB	1:500 - 1:1000
----	----------------

*Results are sample-specific. Please refer to your local assay conditions and test parameters for reference.

PRODUCT OVERVIEW

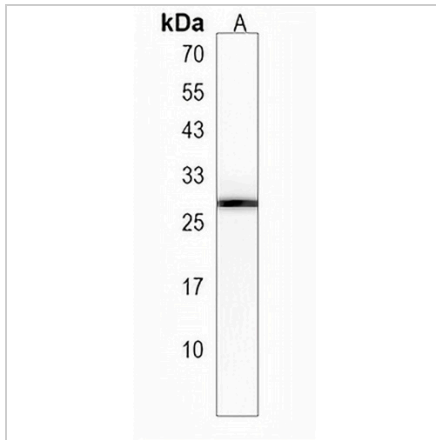
Description	Rabbit polyclonal antibody to SYNGR2
Specificity	Recognizes endogenous levels of SYNGR2 protein.
Antibody Type	Primary antibody
Immunogen	KLH-conjugated synthetic peptide encompassing a sequence within the N-terminal region of human SYNGR2. The exact sequence is proprietary.
Purification	The antibody was purified by immunogen affinity chromatography.
Molecular Weight	Predicted: 24 kD; Observed: 28 kD
Form/Buffer	Liquid in 0.42% Potassium phosphate, 0.87% Sodium chloride, pH 7.3, 30% glycerol, and 0.01% sodium azide.
Alternative Names	Synaptogyrin-2; Cellugyrin
Gene Symbol	SYNGR2
Entrez Gene	9144(Human)
SwissProt	O43760(Human)

*AREX continuously optimizes our products. Webpage content may not reflect the latest updates. For inquiries, please contact info@arexbio.com or your local distributor.

*Clone Number, Reactivity, Source/Host and Clonality can be found in the product name and Key Features section above.

DATASHEET**SYNGR2 Rabbit Polyclonal Antibody**

CAT. NO. APA18185

DATA

Western blot analysis of SYNGR2 expression in 293 (A) whole cell lysates. (Predicted band size: 24 kD; Observed band size: 28 kD)

STORAGE

Store at 4°C short term. For long term storage, store at -20°C, avoiding freeze/thaw cycles.

NOTE

For Research Use Only. Not for diagnostic, therapeutics, prophylactic or in vivo use.