

## DATASHEET

# PRDM8 Rabbit Polyclonal Antibody

CAT. NO. APA18200

### KEY FEATURES

Target	PRDM8	Source / Host	Rabbit
Reactivity	Human	Clonality	Polyclonal
Applications	WB	Conjugation	Unconjugated
Form / Buffer	Liquid in 0.42% Potassium phosphate, 0.87% Sodium chloride, pH 7.3, 30% glycerol, and 0.01% sodium azide.		Storage at-20°C

### BACKGROUND

Probable histone methyltransferase, preferentially acting on 'Lys-9' of histone H3 . Involved in the control of steroidogenesis through transcriptional repression of steroidogenesis marker genes such as CYP17A1 and LHCGR . Forms with BHLHE22 a transcriptional repressor complex controlling genes involved in neural development and neuronal differentiation . In the retina, it is required for rod bipolar and type 2 OFF-cone bipolar cell survival .

### APPLICATION

To ensure optimal assay performance, AREX recommends conducting reagent titration tailored to each testing system for optimal detection results.

WB	1:500 - 1:1000
----	----------------

\*Results are sample-specific. Please refer to your local assay conditions and test parameters for reference.

### PRODUCT OVERVIEW

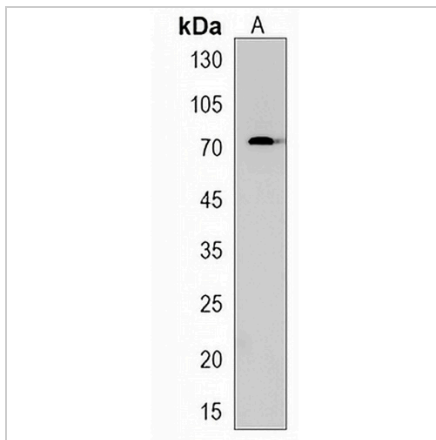
Description	Rabbit polyclonal antibody to PRDM8
Specificity	Recognizes endogenous levels of PRDM8 protein.
Antibody Type	Primary antibody
Immunogen	KLH-conjugated synthetic peptide encompassing a sequence within the N-terminal region of human PRDM8. The exact sequence is proprietary.
Purification	The antibody was purified by immunogen affinity chromatography.
Molecular Weight	Predicted: 71 kD; Observed: 71 kD
Form/Buffer	Liquid in 0.42% Potassium phosphate, 0.87% Sodium chloride, pH 7.3, 30% glycerol, and 0.01% sodium azide.
Alternative Names	PFM5; PR domain zinc finger protein 8; PR domain-containing protein 8
Gene Symbol	PRDM8
Entrez Gene	56978(Human)
SwissProt	Q9NQV8(Human)

\*AREX continuously optimizes our products. Webpage content may not reflect the latest updates. For inquiries, please contact [info@arexbio.com](mailto:info@arexbio.com) or your local distributor.

\*Clone Number, Reactivity, Source/Host and Clonality can be found in the product name and Key Features section above.

**DATASHEET****PRDM8 Rabbit Polyclonal Antibody**

CAT. NO. APA18200

**DATA**

Western blot analysis of PRDM8 expression in CEM (A) whole cell lysates. (Predicted band size: 71 kD; Observed band size: 71 kD)

**STORAGE**

Store at 4°C short term. For long term storage, store at -20°C, avoiding freeze/thaw cycles.

**NOTE**

For Research Use Only. Not for diagnostic, therapeutics, prophylactic or in vivo use.