

DATASHEET

ARHGEF6 Rabbit Polyclonal Antibody

CAT. NO. APA18201

KEY FEATURES

Target	ARHGEF6	Source / Host	Rabbit
Reactivity	Human	Clonality	Polyclonal
Applications	WB	Conjugation	Unconjugated
Form / Buffer	Liquid in 0.42% Potassium phosphate, 0.87% Sodium chloride, pH 7.3, 30% glycerol, and 0.01% sodium azide.		Storage at -20°C

BACKGROUND

Acts as a RAC1 guanine nucleotide exchange factor (GEF).

APPLICATION

To ensure optimal assay performance, AREX recommends conducting reagent titration tailored to each testing system for optimal detection results.

WB	1:500 - 1:1000
----	----------------

*Results are sample-specific. Please refer to your local assay conditions and test parameters for reference.

PRODUCT OVERVIEW

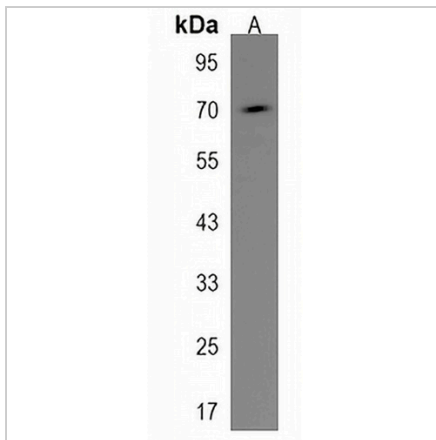
Description	Rabbit polyclonal antibody to ARHGEF6
Specificity	Recognizes endogenous levels of ARHGEF6 protein.
Antibody Type	Primary antibody
Immunogen	KLH-conjugated synthetic peptide encompassing a sequence within the C-terminal region of human ARHGEF6. The exact sequence is proprietary.
Purification	The antibody was purified by immunogen affinity chromatography.
Molecular Weight	Predicted: 87 kD; Observed: 70 kD
Form/Buffer	Liquid in 0.42% Potassium phosphate, 0.87% Sodium chloride, pH 7.3, 30% glycerol, and 0.01% sodium azide.
Alternative Names	COOL2; KIAA0006; PIXA; Rho guanine nucleotide exchange factor 6; Alpha-Pix; COOL-2; PAK-interacting exchange factor alpha; Rac/Cdc42 guanine nucleotide exchange factor 6
Gene Symbol	ARHGEF6
Entrez Gene	9459(Human)
SwissProt	Q15052(Human)

*AREX continuously optimizes our products. Webpage content may not reflect the latest updates. For inquiries, please contact info@arexbio.com or your local distributor.

*Clone Number, Reactivity, Source/Host and Clonality can be found in the product name and Key Features section above.

DATASHEET**ARHGEF6 Rabbit Polyclonal Antibody**

CAT. NO. APA18201

DATA

Western blot analysis of ARHGEF6 expression in K562 (A) whole cell lysates. (Predicted band size: 87 kD; Observed band size: 70 kD)

STORAGE

Store at 4°C short term. For long term storage, store at -20°C, avoiding freeze/thaw cycles.

NOTE

For Research Use Only. Not for diagnostic, therapeutics, prophylactic or in vivo use.