

DATASHEET

LY6G6F Rabbit Polyclonal Antibody

CAT. NO. APA18207

KEY FEATURES

Target	LY6G6F	Source / Host	Rabbit
Reactivity	Human	Clonality	Polyclonal
Applications	WB	Conjugation	Unconjugated
Form / Buffer	Liquid in 0.42% Potassium phosphate, 0.87% Sodium chloride, pH 7.3, 30% glycerol, and 0.01% sodium azide.		Storage at -20°C

BACKGROUND

May play a role in the downstream signal transduction pathways involving GRB2 and GRB7.

APPLICATION

To ensure optimal assay performance, AREX recommends conducting reagent titration tailored to each testing system for optimal detection results.

WB	1:500 - 1:1000
----	----------------

*Results are sample-specific. Please refer to your local assay conditions and test parameters for reference.

PRODUCT OVERVIEW

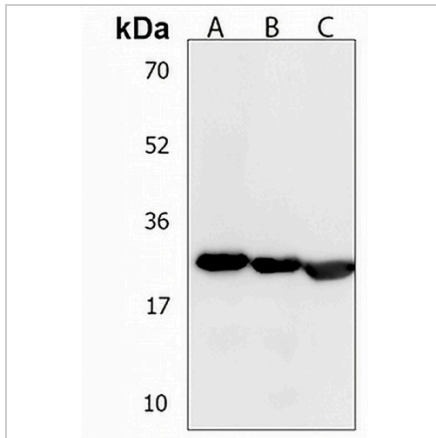
Description	Rabbit polyclonal antibody to LY6G6F
Specificity	Recognizes endogenous levels of LY6G6F protein.
Antibody Type	Primary antibody
Immunogen	KLH-conjugated synthetic peptide encompassing a sequence within the N-terminal region of human LY6G6F. The exact sequence is proprietary.
Purification	The antibody was purified by immunogen affinity chromatography.
Molecular Weight	Predicted: 32 kD; Observed: 32 kD
Form/Buffer	Liquid in 0.42% Potassium phosphate, 0.87% Sodium chloride, pH 7.3, 30% glycerol, and 0.01% sodium azide.
Alternative Names	C6orf21; G6F; LY6G6D; NG32; Lymphocyte antigen 6 complex locus protein G6f
Gene Symbol	LY6G6F
Entrez Gene	259215(Human)
SwissProt	Q5SQ64(Human)

*AREX continuously optimizes our products. Webpage content may not reflect the latest updates. For inquiries, please contact info@arexbio.com or your local distributor.

*Clone Number, Reactivity, Source/Host and Clonality can be found in the product name and Key Features section above.

DATASHEET**LY6G6F Rabbit Polyclonal Antibody**

CAT. NO. APA18207

DATA

Western blot analysis of LY6G6F expression in A431 (A), HepG2 (B), Jurkat (C) whole cell lysates. (Predicted band size: 32 kD; Observed band size: 32 kD)

STORAGE

Store at 4°C short term. For long term storage, store at -20°C, avoiding freeze/thaw cycles.

NOTE

For Research Use Only. Not for diagnostic, therapeutics, prophylactic or in vivo use.