

DATASHEET

PLEKHF2 Rabbit Polyclonal Antibody

CAT. NO. APA18208

KEY FEATURES

Target	PLEKHF2	Source / Host	Rabbit
Reactivity	Human	Clonality	Polyclonal
Applications	WB	Conjugation	Unconjugated
Form / Buffer	Liquid in 0.42% Potassium phosphate, 0.87% Sodium chloride, pH 7.3, 30% glycerol, and 0.01% sodium azide.		Storage at -20°C

BACKGROUND

May play a role in early endosome fusion upstream of RAB5, hence regulating receptor trafficking and fluid-phase transport. Enhances cellular sensitivity to TNF-induced apoptosis .

APPLICATION

To ensure optimal assay performance, AREX recommends conducting reagent titration tailored to each testing system for optimal detection results.

WB	1:500 - 1:1000
----	----------------

*Results are sample-specific. Please refer to your local assay conditions and test parameters for reference.

PRODUCT OVERVIEW

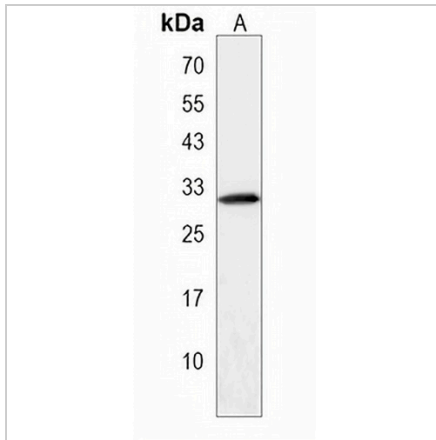
Description	Rabbit polyclonal antibody to PLEKHF2
Specificity	Recognizes endogenous levels of PLEKHF2 protein.
Antibody Type	Primary antibody
Immunogen	KLH-conjugated synthetic peptide encompassing a sequence within the Central region of human PLEKHF2. The exact sequence is proprietary.
Purification	The antibody was purified by immunogen affinity chromatography.
Molecular Weight	Predicted: 27 kD; Observed: 30 kD
Form/Buffer	Liquid in 0.42% Potassium phosphate, 0.87% Sodium chloride, pH 7.3, 30% glycerol, and 0.01% sodium azide.
Alternative Names	ZFYVE18; Pleckstrin homology domain-containing family F member 2; PH domain-containing family F member 2; Endoplasmic reticulum-associated apoptosis-involved protein containing PH and FYVE domains; EAPF; PH and FYVE domain-containing protein 2; Phafin-2; Phafin2; Zinc finger FYVE domain-containing protein 18
Gene Symbol	PLEKHF2
Entrez Gene	79666(Human)
SwissProt	Q9H8W4(Human)

*AREX continuously optimizes our products. Webpage content may not reflect the latest updates. For inquiries, please contact info@arexbio.com or your local distributor.

*Clone Number, Reactivity, Source/Host and Clonality can be found in the product name and Key Features section above.

DATASHEET**PLEKHF2 Rabbit Polyclonal Antibody**

CAT. NO. APA18208

DATA

Western blot analysis of PLEKHF2 expression in HL60 (A) whole cell lysates. (Predicted band size: 27 kD; Observed band size: 30 kD)

STORAGE

Store at 4°C short term. For long term storage, store at -20°C, avoiding freeze/thaw cycles.

NOTE

For Research Use Only. Not for diagnostic, therapeutics, prophylactic or in vivo use.