

DATASHEET

PHEX Rabbit Polyclonal Antibody

CAT. NO. APA18212

KEY FEATURES

Target	PHEX	Source / Host	Rabbit
Reactivity	Human	Clonality	Polyclonal
Applications	WB	Conjugation	Unconjugated
Form / Buffer	Liquid in 0.42% Potassium phosphate, 0.87% Sodium chloride, pH 7.3, 30% glycerol, and 0.01% sodium azide.		Storage at -20°C

BACKGROUND

Peptidase that cleaves SIBLING (small integrin-binding ligand, N-linked glycoprotein)-derived ASARM peptides, thus regulating their biological activity -derived ASARM peptides, thus regulating their biological activity . Cleaves ASARM peptides between Ser and Glu or Asp residues . Regulates osteogenic cell differentiation and bone mineralization through the cleavage of the MEPE-derived ASARM peptide . Promotes dentin mineralization and renal phosphate reabsorption by cleaving DMP1- and MEPE-derived ASARM peptides . Inhibits the cleavage of MEPE by CTSB/cathepsin B thus preventing MEPE degradation .

APPLICATION

To ensure optimal assay performance, AREX recommends conducting reagent titration tailored to each testing system for optimal detection results.

WB	1:500 - 1:1000
----	----------------

*Results are sample-specific. Please refer to your local assay conditions and test parameters for reference.

PRODUCT OVERVIEW

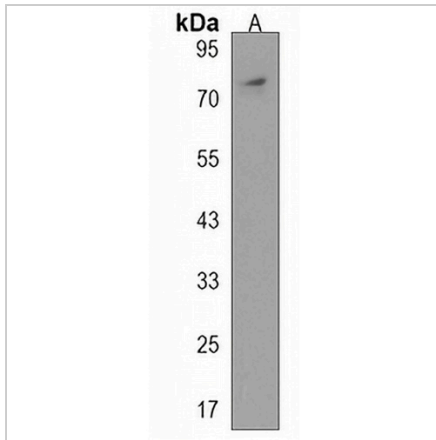
Description	Rabbit polyclonal antibody to PHEX
Specificity	Recognizes endogenous levels of PHEX protein.
Antibody Type	Primary antibody
Immunogen	KLH-conjugated synthetic peptide encompassing a sequence within the C-terminal region of human PHEX. The exact sequence is proprietary.
Purification	The antibody was purified by immunogen affinity chromatography.
Molecular Weight	Predicted: 86 kD; Observed: 72 kD
Form/Buffer	Liquid in 0.42% Potassium phosphate, 0.87% Sodium chloride, pH 7.3, 30% glycerol, and 0.01% sodium azide.
Alternative Names	PEX; Phosphate-regulating neutral endopeptidase; Metalloendopeptidase homolog PEX; Vitamin D-resistant hypophosphatemic rickets protein; X-linked hypophosphatemia protein; HYP
Gene Symbol	PHEX
Entrez Gene	5251(Human)
SwissProt	P78562(Human)

*AREX continuously optimizes our products. Webpage content may not reflect the latest updates. For inquiries, please contact info@arex.bio or your local distributor.

*Clone Number, Reactivity, Source/Host and Clonality can be found in the product name and Key Features section above.

DATASHEET**PHEX Rabbit Polyclonal Antibody**

CAT. NO. APA18212

DATA

Western blot analysis of PHEX expression in 293 (A) whole cell lysates. (Predicted band size: 86 kD; Observed band size: 72 kD)

STORAGE

Store at 4°C short term. For long term storage, store at -20°C, avoiding freeze/thaw cycles.

NOTE

For Research Use Only. Not for diagnostic, therapeutics, prophylactic or in vivo use.