

DATASHEET

PTTG2 Rabbit Polyclonal Antibody

CAT. NO. APA18215

KEY FEATURES

Target	PTTG2	Source / Host	Rabbit
Reactivity	Human	Clonality	Polyclonal
Applications	WB, IF/ICC	Conjugation	Unconjugated
Form / Buffer	Liquid in 0.42% Potassium phosphate, 0.87% Sodium chloride, pH 7.3, 30% glycerol, and 0.01% sodium azide.		Storage at-20°C

BACKGROUND

Securin-2 (PTTG2), also known as Pituitary tumor-transforming gene 2 protein. Belongs to the securin family Subcellular location: Cytoplasm; Nucleus Tissue specificity: Expressed at low levels in the pituitary, liver, spleen, prostate, testis, ovary, small intestine and colon. Also expressed in various pituitary, testicular, liver and ovarian tumors Domain: The N-terminal destruction box (D-box) acts as a recognition signal for degradation via the ubiquitin-proteasome pathway

APPLICATION

To ensure optimal assay performance, AREX recommends conducting reagent titration tailored to each testing system for optimal detection results.

WB	1:500 - 1:1000
IF/ICC	1:10 - 1:50

*Results are sample-specific. Please refer to your local assay conditions and test parameters for reference.

PRODUCT OVERVIEW

Description	Rabbit polyclonal antibody to PTTG2
Specificity	Recognizes endogenous levels of PTTG2 protein.
Antibody Type	Primary antibody
Immunogen	KLH-conjugated synthetic peptide encompassing a sequence within the Central region of human PTTG2. The exact sequence is proprietary.
Purification	The antibody was purified by immunogen affinity chromatography.
Molecular Weight	Predicted: 22 kD; Observed: 25 kD
Form/Buffer	Liquid in 0.42% Potassium phosphate, 0.87% Sodium chloride, pH 7.3, 30% glycerol, and 0.01% sodium azide.
Alternative Names	Securin-2; Pituitary tumor-transforming gene 2 protein
Gene Symbol	PTTG2
Entrez Gene	10744(Human)
SwissProt	Q9NZH5(Human)

*AREX continuously optimizes our products. Webpage content may not reflect the latest updates. For inquiries, please contact info@arexbio.com or your local distributor.

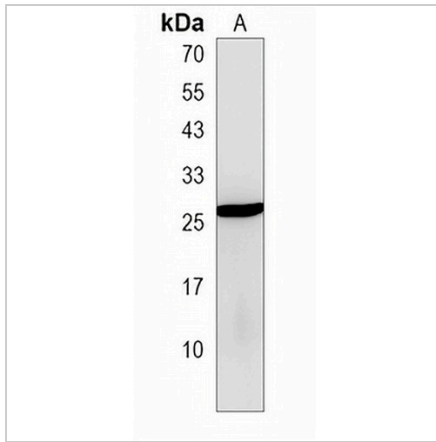
*Clone Number, Reactivity, Source/Host and Clonality can be found in the product name and Key Features section above.

DATASHEET

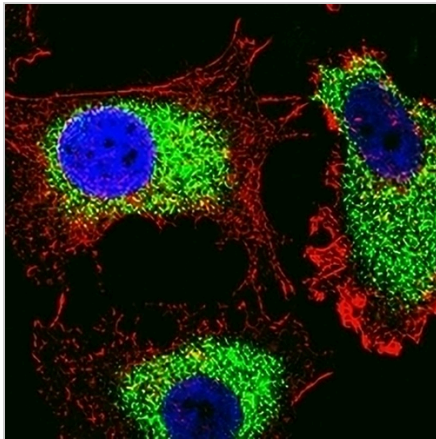
PTTG2 Rabbit Polyclonal Antibody

CAT. NO. APA18215

DATA



Western blot analysis of PTTG2 expression in human liver (A) whole cell lysates. (Predicted band size: 22 kD; Observed band size: 25 kD)



Immunofluorescent analysis of Anti-PTTG2 staining in MCF7 cells. Formalin-fixed cells were permeabilized with 0.1% Triton X-100 in TBS for 5-10 minutes and blocked with 3% BSA-PBS for 30 minutes at room temperature. Cells were probed with the primary antibody in 3% BSA-PBS and incubated overnight at 4 °C in a humidified chamber. Cells were washed with PBST and incubated with a AREX® Fluor 488 -conjugated secondary antibody (green) in PBS at room temperature in the dark. Phalloidin - AREX® Fluor 555 was used to stain Actin filaments (red). DAPI was used to stain the cell nuclei (blue).

STORAGE

Store at 4°C short term. For long term storage, store at -20°C, avoiding freeze/thaw cycles.

NOTE

For Research Use Only. Not for diagnostic, therapeutics, prophylactic or in vivo use.