

**DATASHEET**

**CaMK1 alpha Rabbit Polyclonal Antibody**

CAT. NO. APA18217

**KEY FEATURES**

Target	CaMK1 alpha	Source / Host	Rabbit
Reactivity	Human	Clonality	Polyclonal
Applications	WB	Conjugation	Unconjugated
Form / Buffer	Liquid in 0.42% Potassium phosphate, 0.87% Sodium chloride, pH 7.3, 30% glycerol, and 0.01% sodium azide.		Storage at-20°C

**BACKGROUND**

Calcium/calmodulin-dependent protein kinase belonging to a proposed calcium-triggered signaling cascade. In vitro phosphorylates CREB1 and SYN1/synapsin I. Phosphorylates and activates CAMK1 .

**APPLICATION**

To ensure optimal assay performance, AREX recommends conducting reagent titration tailored to each testing system for optimal detection results.

WB	1:500 - 1:1000
----	----------------

\*Results are sample-specific. Please refer to your local assay conditions and test parameters for reference.

**PRODUCT OVERVIEW**

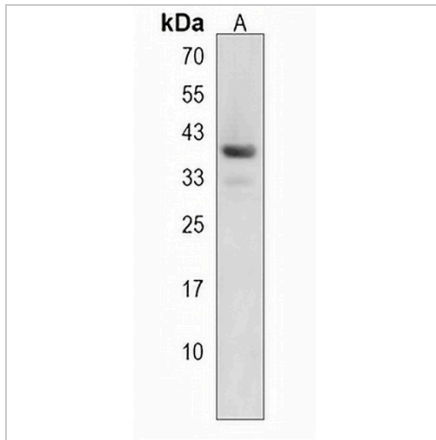
Description	Rabbit polyclonal antibody to CaMK1 alpha
Specificity	Recognizes endogenous levels of CaMK1 alpha protein.
Antibody Type	Primary antibody
Immunogen	KLH-conjugated synthetic peptide encompassing a sequence within the C-terminal region of human CaMK1 alpha. The exact sequence is proprietary.
Purification	The antibody was purified by immunogen affinity chromatography.
Molecular Weight	Predicted: 38 kD; Observed: 40 kD
Form/Buffer	Liquid in 0.42% Potassium phosphate, 0.87% Sodium chloride, pH 7.3, 30% glycerol, and 0.01% sodium azide.
Alternative Names	Calcium/calmodulin-dependent protein kinase type 1B; CaM kinase I beta; CaM kinase IB; CaM-KI beta; CaMKI-beta; Pregnancy up-regulated non-ubiquitously-expressed CaM kinase
Gene Symbol	PNCK
Entrez Gene	139728(Human)
SwissProt	Q6P2M8(Human)

\*AREX continuously optimizes our products. Webpage content may not reflect the latest updates. For inquiries, please contact [info@arexbio.com](mailto:info@arexbio.com) or your local distributor.

\*Clone Number, Reactivity, Source/Host and Clonality can be found in the product name and Key Features section above.

**DATASHEET****CaMK1 alpha Rabbit Polyclonal Antibody**

CAT. NO. APA18217

**DATA**

Western blot analysis of CaMK1 alpha expression in 293 (A) whole cell lysates. (Predicted band size: 38 kD; Observed band size: 40 kD)

**STORAGE**

Store at 4°C short term. For long term storage, store at -20°C, avoiding freeze/thaw cycles.

**NOTE**

For Research Use Only. Not for diagnostic, therapeutics, prophylactic or in vivo use.