

## DATASHEET

# ANP32B Rabbit Polyclonal Antibody

CAT. NO. APA18226

### KEY FEATURES

|               |   |               |                     |
|---------------|---|---------------|---------------------|
| Target        | ANP32B  | Source / Host | Rabbit              |
| Reactivity    | Human   | Clonality     | Polyclonal          |
| Applications  | WB  | Conjugation   | Unconjugated        |
| Form / Buffer | Liquid in 0.42% Potassium phosphate, 0.87% Sodium chloride, pH 7.3, 30% glycerol, and 0.01% sodium azide. |               | Storage<br>at -20°C |

### BACKGROUND

Multifunctional protein that is involved in the regulation of many processes including cell proliferation, apoptosis, cell cycle progression or transcription. Regulates the proliferation of neuronal stem cells, differentiation of leukemic cells and progression from G1 to S phase of the cell cycle. As negative regulator of caspase-3-dependent apoptosis, may act as an antagonist of ANP32A in regulating tissue homeostasis. Exhibits histone chaperone properties, able to recruit histones to certain promoters, thus regulating the transcription of specific genes. Also plays an essential role in the nucleocytoplasmic transport of specific mRNAs via the uncommon nuclear mRNA export receptor XPO1/CRM1.

### APPLICATION

To ensure optimal assay performance, AREX recommends conducting reagent titration tailored to each testing system for optimal detection results.

|    |                |
|----|----------------|
| WB | 1:500 - 1:1000 |
|----|----------------|

\*Results are sample-specific. Please refer to your local assay conditions and test parameters for reference.

### PRODUCT OVERVIEW

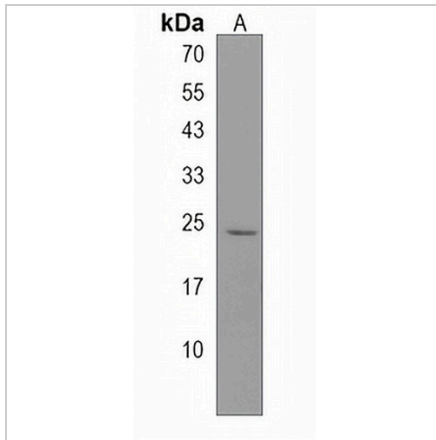
|                   |   |
|-------------------|---|
| Description       | Rabbit polyclonal antibody to ANP32B  |
| Specificity       | Recognizes endogenous levels of ANP32B protein.   |
| Antibody Type     | Primary antibody  |
| Immunogen         | KLH-conjugated synthetic peptide encompassing a sequence within the N-terminal region of human ANP32B. The exact sequence is proprietary.   |
| Purification      | The antibody was purified by immunogen affinity chromatography.   |
| Molecular Weight  | Predicted: 28 kD; Observed: 24 kD   |
| Form/Buffer       | Liquid in 0.42% Potassium phosphate, 0.87% Sodium chloride, pH 7.3, 30% glycerol, and 0.01% sodium azide.   |
| Alternative Names | APRIL; PHAPI2; Acidic leucine-rich nuclear phosphoprotein 32 family member B; Acidic protein rich in leucines; Putative HLA-DR-associated protein I-2; PHAPI2; Silver-stainable protein SSP29 |
| Gene Symbol       | ANP32B  |
| Entrez Gene       | 10541(Human)  |
| SwissProt         | Q92688(Human)   |

\*AREX continuously optimizes our products. Webpage content may not reflect the latest updates. For inquiries, please contact [info@arexbio.com](mailto:info@arexbio.com) or your local distributor.

\*Clone Number, Reactivity, Source/Host and Clonality can be found in the product name and Key Features section above.

**DATASHEET****ANP32B Rabbit Polyclonal Antibody**

CAT. NO. APA18226

**DATA**

Western blot analysis of ANP32B expression in human placenta (A) whole cell lysates.  
(Predicted band size: 28 kD; Observed band size: 24 kD)

**STORAGE**

Store at 4°C short term. For long term storage, store at -20°C, avoiding freeze/thaw cycles.

**NOTE**

For Research Use Only. Not for diagnostic, therapeutics, prophylactic or in vivo use.