

**DATASHEET**

**SAP30 Rabbit Polyclonal Antibody**

CAT. NO. APA18229

**KEY FEATURES**

Target	SAP30	Source / Host	Rabbit
Reactivity	Human	Clonality	Polyclonal
Applications	WB	Conjugation	Unconjugated
Form / Buffer	Liquid in 0.42% Potassium phosphate, 0.87% Sodium chloride, pH 7.3, 30% glycerol, and 0.01% sodium azide.		Storage at -20°C

**BACKGROUND**

Involved in the functional recruitment of the Sin3-histone deacetylase complex (HDAC) to a specific subset of N-CoR corepressor complexes. Capable of transcription repression by N-CoR. Active in deacetylating core histone octamers (when in a complex) but inactive in deacetylating nucleosomal histones.

**APPLICATION**

To ensure optimal assay performance, AREX recommends conducting reagent titration tailored to each testing system for optimal detection results.

WB	1:500 - 1:1000
----	----------------

\*Results are sample-specific. Please refer to your local assay conditions and test parameters for reference.

**PRODUCT OVERVIEW**

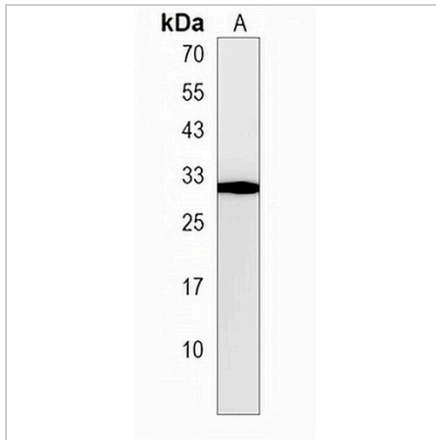
Description	Rabbit polyclonal antibody to SAP30
Specificity	Recognizes endogenous levels of SAP30 protein.
Antibody Type	Primary antibody
Immunogen	KLH-conjugated synthetic peptide encompassing a sequence within the C-terminal region of human SAP30. The exact sequence is proprietary.
Purification	The antibody was purified by immunogen affinity chromatography.
Molecular Weight	Predicted: 23 kD; Observed: 30 kD
Form/Buffer	Liquid in 0.42% Potassium phosphate, 0.87% Sodium chloride, pH 7.3, 30% glycerol, and 0.01% sodium azide.
Alternative Names	Histone deacetylase complex subunit SAP30; 30 kDa Sin3-associated polypeptide; Sin3 corepressor complex subunit SAP30; Sin3-associated polypeptide p30
Gene Symbol	SAP30
Entrez Gene	8819(Human)
SwissProt	O75446(Human)

\*AREX continuously optimizes our products. Webpage content may not reflect the latest updates. For inquiries, please contact [info@arexbio.com](mailto:info@arexbio.com) or your local distributor.

\*Clone Number, Reactivity, Source/Host and Clonality can be found in the product name and Key Features section above.

**DATASHEET****SAP30 Rabbit Polyclonal Antibody**

CAT. NO. APA18229

**DATA**

Western blot analysis of SAP30 expression in human spleen (A) whole cell lysates.  
(Predicted band size: 23 kD; Observed band size: 30 kD)

**STORAGE**

Store at 4°C short term. For long term storage, store at -20°C, avoiding freeze/thaw cycles.

**NOTE**

For Research Use Only. Not for diagnostic, therapeutics, prophylactic or in vivo use.