

DATASHEET

NCAPG2 Rabbit Polyclonal Antibody

CAT. NO. APA18232

KEY FEATURES

Target	NCAPG2	Source / Host	Rabbit
Reactivity	Human	Clonality	Polyclonal
Applications	WB	Conjugation	Unconjugated
Form / Buffer	Liquid in 0.42% Potassium phosphate, 0.87% Sodium chloride, pH 7.3, 30% glycerol, and 0.01% sodium azide.		Storage at -20°C

BACKGROUND

Regulatory subunit of the condensin-2 complex, a complex which establishes mitotic chromosome architecture and is involved in physical rigidity of the chromatid axis.

APPLICATION

To ensure optimal assay performance, AREX recommends conducting reagent titration tailored to each testing system for optimal detection results.

WB	1:500 - 1:1000
----	----------------

*Results are sample-specific. Please refer to your local assay conditions and test parameters for reference.

PRODUCT OVERVIEW

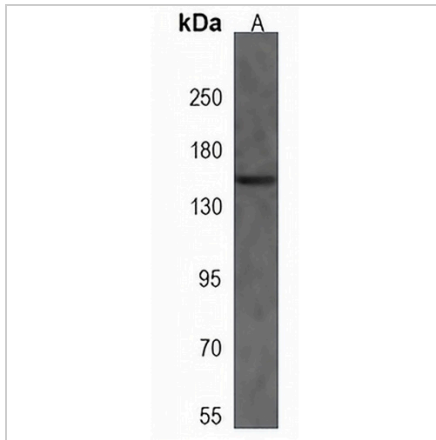
Description	Rabbit polyclonal antibody to NCAPG2
Specificity	Recognizes endogenous levels of NCAPG2 protein.
Antibody Type	Primary antibody
Immunogen	KLH-conjugated synthetic peptide encompassing a sequence within the Central region of human NCAPG2. The exact sequence is proprietary.
Purification	The antibody was purified by immunogen affinity chromatography.
Molecular Weight	Predicted: 130 kD; Observed: 150 kD
Form/Buffer	Liquid in 0.42% Potassium phosphate, 0.87% Sodium chloride, pH 7.3, 30% glycerol, and 0.01% sodium azide.
Alternative Names	LUZP5; Condensin-2 complex subunit G2; Chromosome-associated protein G2; CAP-G2; hCAP-G2; Leucine zipper protein 5; Non-SMC condensin II complex subunit G2
Gene Symbol	NCAPG2
Entrez Gene	54892(Human)
SwissProt	Q86XI2(Human)

*AREX continuously optimizes our products. Webpage content may not reflect the latest updates. For inquiries, please contact info@arexbio.com or your local distributor.

*Clone Number, Reactivity, Source/Host and Clonality can be found in the product name and Key Features section above.

DATASHEET**NCAPG2 Rabbit Polyclonal Antibody**

CAT. NO. APA18232

DATA

Western blot analysis of NCAPG2 expression in MCF7 (A) whole cell lysates. (Predicted band size: 130 kD; Observed band size: 150 kD)

STORAGE

Store at 4°C short term. For long term storage, store at -20°C, avoiding freeze/thaw cycles.

NOTE

For Research Use Only. Not for diagnostic, therapeutics, prophylactic or in vivo use.