

## DATASHEET

# P2Y6 Rabbit Polyclonal Antibody

CAT. NO. APA18235

### KEY FEATURES

Target	P2Y6	Source / Host	Rabbit
Reactivity	Human	Clonality	Polyclonal
Applications	WB	Conjugation	Unconjugated
Form / Buffer	Liquid in 0.42% Potassium phosphate, 0.87% Sodium chloride, pH 7.3, 30% glycerol, and 0.01% sodium azide.		Storage at -20°C

### BACKGROUND

May act as a modulatory subunit rather than a functional channel. Unlike other P2XR members, P2RX6 does not seem to form functional homotrimers. P2RX6 requires the presence of P2RX4 or P2RX2 to shuttle it to the plasma membrane where it may form functional heterotrimeric receptors at the plasma membrane. P2RX6 can be translocated to the nucleus and functions as a nuclear regulator of post-transcriptional modifications in neurons.

### APPLICATION

To ensure optimal assay performance, AREX recommends conducting reagent titration tailored to each testing system for optimal detection results.

WB	1:500 - 1:1000
----	----------------

\*Results are sample-specific. Please refer to your local assay conditions and test parameters for reference.

### PRODUCT OVERVIEW

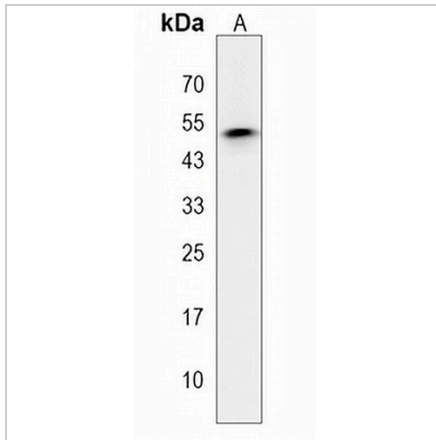
Description	Rabbit polyclonal antibody to P2Y6
Specificity	Recognizes endogenous levels of P2Y6 protein.
Antibody Type	Primary antibody
Immunogen	KLH-conjugated synthetic peptide encompassing a sequence within the Central region of human P2Y6. The exact sequence is proprietary.
Purification	The antibody was purified by immunogen affinity chromatography.
Molecular Weight	Predicted: 48 kD; Observed: 53 kD
Form/Buffer	Liquid in 0.42% Potassium phosphate, 0.87% Sodium chloride, pH 7.3, 30% glycerol, and 0.01% sodium azide.
Alternative Names	P2RXL1; P2X6; P2X purinoceptor 6; P2X6; ATP receptor; P2XM; Purinergic receptor; Purinergic receptor P2X-like 1
Gene Symbol	P2RX6
Entrez Gene	9127(Human)
SwissProt	O15547(Human)

\*AREX continuously optimizes our products. Webpage content may not reflect the latest updates. For inquiries, please contact [info@arexbio.com](mailto:info@arexbio.com) or your local distributor.

\*Clone Number, Reactivity, Source/Host and Clonality can be found in the product name and Key Features section above.

**DATASHEET****P2Y6 Rabbit Polyclonal Antibody**

CAT. NO. APA18235

**DATA**

Western blot analysis of P2Y6 expression in 293 (A) whole cell lysates. (Predicted band size: 48 kD; Observed band size: 53 kD)

**STORAGE**

Store at 4°C short term. For long term storage, store at -20°C, avoiding freeze/thaw cycles.

**NOTE**

For Research Use Only. Not for diagnostic, therapeutics, prophylactic or in vivo use.