

**DATASHEET**

**TRAT1 Rabbit Polyclonal Antibody**

CAT. NO. APA18237

**KEY FEATURES**

Target	TRAT1	Source / Host	Rabbit
Reactivity	Human, Mouse	Clonality	Polyclonal
Applications	WB	Conjugation	Unconjugated
Form / Buffer	Liquid in 0.42% Potassium phosphate, 0.87% Sodium chloride, pH 7.3, 30% glycerol, and 0.01% sodium azide.		Storage at -20°C

**BACKGROUND**

Stabilizes the TCR (T-cell antigen receptor)/CD3 complex at the surface of T-cells.

**APPLICATION**

To ensure optimal assay performance, AREX recommends conducting reagent titration tailored to each testing system for optimal detection results.

WB	1:500 - 1:1000
----	----------------

\*Results are sample-specific. Please refer to your local assay conditions and test parameters for reference.

**PRODUCT OVERVIEW**

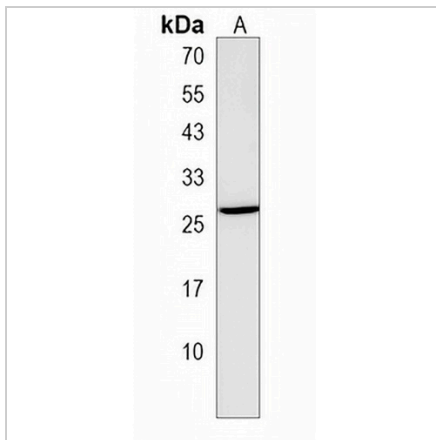
Description	Rabbit polyclonal antibody to TRAT1
Specificity	Recognizes endogenous levels of TRAT1 protein.
Antibody Type	Primary antibody
Immunogen	KLH-conjugated synthetic peptide encompassing a sequence within the Central region of human TRAT1. The exact sequence is proprietary.
Purification	The antibody was purified by immunogen affinity chromatography.
Molecular Weight	Predicted: 21 kD; Observed: 27 kD
Form/Buffer	Liquid in 0.42% Potassium phosphate, 0.87% Sodium chloride, pH 7.3, 30% glycerol, and 0.01% sodium azide.
Alternative Names	TCRIM; T-cell receptor-associated transmembrane adapter 1; T-cell receptor-interacting molecule; TRIM; pp29/30
Gene Symbol	TRAT1
Entrez Gene	50852(Human); 77647(Mouse)
SwissProt	Q6PIZ9(Human); Q3UU67(Mouse)

\*AREX continuously optimizes our products. Webpage content may not reflect the latest updates. For inquiries, please contact [info@arexbio.com](mailto:info@arexbio.com) or your local distributor.

\*Clone Number, Reactivity, Source/Host and Clonality can be found in the product name and Key Features section above.

**DATASHEET****TRAT1 Rabbit Polyclonal Antibody**

CAT. NO. APA18237

**DATA**

Western blot analysis of TRAT1 expression in K562 (A) whole cell lysates. (Predicted band size: 21 kD; Observed band size: 27 kD)

**STORAGE**

Store at 4°C short term. For long term storage, store at -20°C, avoiding freeze/thaw cycles.

**NOTE**

For Research Use Only. Not for diagnostic, therapeutics, prophylactic or in vivo use.