

**DATASHEET**

**MT-ND4L Rabbit Polyclonal Antibody**

CAT. NO. APA18238

**KEY FEATURES**

Target	MT-ND4L	Source / Host	Rabbit
Reactivity	Human	Clonality	Polyclonal
Applications	WB	Conjugation	Unconjugated
Form / Buffer	Liquid in 0.42% Potassium phosphate, 0.87% Sodium chloride, pH 7.3, 30% glycerol, and 0.01% sodium azide.		Storage at-20°C

**BACKGROUND**

Core subunit of the mitochondrial membrane respiratory chain NADH dehydrogenase (Complex I) which catalyzes electron transfer from NADH through the respiratory chain, using ubiquinone as an electron acceptor which catalyzes electron transfer from NADH through the respiratory chain, using ubiquinone as an electron acceptor . Part of the enzyme membrane arm which is embedded in the lipid bilayer and involved in proton translocation .

**APPLICATION**

To ensure optimal assay performance, AREX recommends conducting reagent titration tailored to each testing system for optimal detection results.

WB	1:500 - 1:1000
----	----------------

\*Results are sample-specific. Please refer to your local assay conditions and test parameters for reference.

**PRODUCT OVERVIEW**

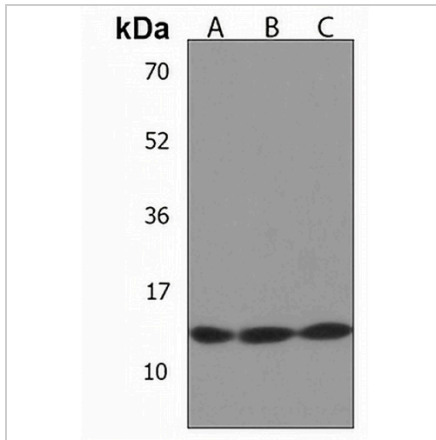
Description	Rabbit polyclonal antibody to MT-ND4L
Specificity	Recognizes endogenous levels of MT-ND4L protein.
Antibody Type	Primary antibody
Immunogen	KLH-conjugated synthetic peptide encompassing a sequence within the C-terminal region of human MT-ND4L. The exact sequence is proprietary.
Purification	The antibody was purified by immunogen affinity chromatography.
Molecular Weight	Predicted: 10 kD; Observed: 14 kD
Form/Buffer	Liquid in 0.42% Potassium phosphate, 0.87% Sodium chloride, pH 7.3, 30% glycerol, and 0.01% sodium azide.
Alternative Names	MTND4L; NADH4L; ND4L; NADH-ubiquinone oxidoreductase chain 4L; NADH dehydrogenase subunit 4L
Gene Symbol	MT-ND4L
Entrez Gene	4539(Human)
SwissProt	P03901(Human)

\*AREX continuously optimizes our products. Webpage content may not reflect the latest updates. For inquiries, please contact [info@arexbio.com](mailto:info@arexbio.com) or your local distributor.

\*Clone Number, Reactivity, Source/Host and Clonality can be found in the product name and Key Features section above.

**DATASHEET****MT-ND4L Rabbit Polyclonal Antibody**

CAT. NO. APA18238

**DATA**

Western blot analysis of MT-ND4L expression in HeLa (A), HL60 (B), human kidney (C) whole cell lysates. (Predicted band size: 10 kD; Observed band size: 14 kD)

**STORAGE**

Store at 4°C short term. For long term storage, store at -20°C, avoiding freeze/thaw cycles.

**NOTE**

For Research Use Only. Not for diagnostic, therapeutics, prophylactic or in vivo use.