

DATASHEET

ESX1 Rabbit Polyclonal Antibody

CAT. NO. APA18242

KEY FEATURES

Target	ESX1	Source / Host	Rabbit
Reactivity	Human	Clonality	Polyclonal
Applications	WB	Conjugation	Unconjugated
Form / Buffer	Liquid in 0.42% Potassium phosphate, 0.87% Sodium chloride, pH 7.3, 30% glycerol, and 0.01% sodium azide.		Storage at -20°C

BACKGROUND

May coordinately regulate cell cycle progression and transcription during spermatogenesis. Inhibits degradation of polyubiquitinated cyclin A and cyclin B1 and thereby arrests the cell cycle at early M phase. ESXR1-N acts as a transcriptional repressor. Binds to the sequence 5'-TAATGTTATTA-3' which is present within the first intron of the KRAS gene and inhibits its expression. ESXR1-C has the ability to inhibit cyclin turnover.

APPLICATION

To ensure optimal assay performance, AREX recommends conducting reagent titration tailored to each testing system for optimal detection results.

WB	1:500 - 1:1000
----	----------------

*Results are sample-specific. Please refer to your local assay conditions and test parameters for reference.

PRODUCT OVERVIEW

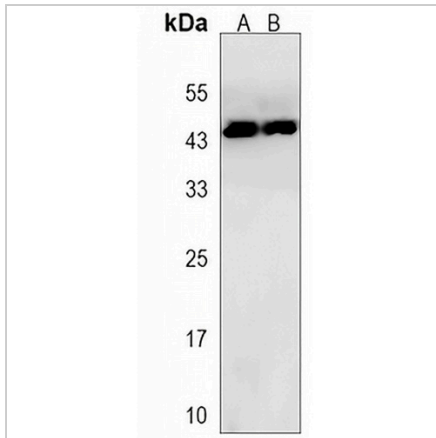
Description	Rabbit polyclonal antibody to ESX1
Specificity	Recognizes endogenous levels of ESX1 protein.
Antibody Type	Primary antibody
Immunogen	KLH-conjugated synthetic peptide encompassing a sequence within the N-terminal region of human ESX1. The exact sequence is proprietary.
Purification	The antibody was purified by immunogen affinity chromatography.
Molecular Weight	Predicted: 44 kD; Observed: 44 kD
Form/Buffer	Liquid in 0.42% Potassium phosphate, 0.87% Sodium chloride, pH 7.3, 30% glycerol, and 0.01% sodium azide.
Alternative Names	ESX1L; ESX1R; Homeobox protein ESX1; Extraembryonic, spermatogenesis, homeobox 1
Gene Symbol	ESX1
Entrez Gene	80712(Human)
SwissProt	Q8N693(Human)

*AREX continuously optimizes our products. Webpage content may not reflect the latest updates. For inquiries, please contact info@arexbio.com or your local distributor.

*Clone Number, Reactivity, Source/Host and Clonality can be found in the product name and Key Features section above.

DATASHEET**ESX1 Rabbit Polyclonal Antibody**

CAT. NO. APA18242

DATA

Western blot analysis of ESX1 expression in human ovary (A), human placenta (B) whole cell lysates. (Predicted band size: 44 kD; Observed band size: 44 kD)

STORAGE

Store at 4°C short term. For long term storage, store at -20°C, avoiding freeze/thaw cycles.

NOTE

For Research Use Only. Not for diagnostic, therapeutics, prophylactic or in vivo use.