

DATASHEET

PIGO Rabbit Polyclonal Antibody

CAT. NO. APA18244

KEY FEATURES

Target	PIGO	Source / Host	Rabbit
Reactivity	Human	Clonality	Polyclonal
Applications	WB	Conjugation	Unconjugated
Form / Buffer	Liquid in 0.42% Potassium phosphate, 0.87% Sodium chloride, pH 7.3, 30% glycerol, and 0.01% sodium azide.		Storage at -20°C

BACKGROUND

Catalytic subunit of the ethanolamine phosphate transferase 3 complex that transfers an ethanolamine phosphate (EtNP) from a phosphatidylethanolamine (PE) to the 6-OH position of the third alpha-1,2-linked mannose of the a 2-acyl-6-[alpha-D-mannosyl-(1->2)-alpha-D-mannosyl-(1->6)-2-phosphoethanolamine-alpha-D-mannosyl-(1->4)-alpha-D-glucosaminyl]-1-(1-radyl,2-acyl-sn-glycero-3-phospho)-1D-myo-inositol (also termed H6) intermediate to generate a a 2-acyl-6-[6-phosphoethanolamine-alpha-D-mannosyl-(1->2)-alpha-D-mannosyl-(1->6)-2-phosphoethanolamine-alpha-D-mannosyl-(1->4)-alpha-D-glucosaminyl]-1-(1-radyl,2-acyl-sn-glycero-3-phospho)-1D-myo-inositol (also termed H7) and participates in the tenth step of the glycosylphosphatidylinositol-anchor biosynthesis.

APPLICATION

To ensure optimal assay performance, AREX recommends conducting reagent titration tailored to each testing system for optimal detection results.

WB	1:500 - 1:1000
----	----------------

*Results are sample-specific. Please refer to your local assay conditions and test parameters for reference.

PRODUCT OVERVIEW

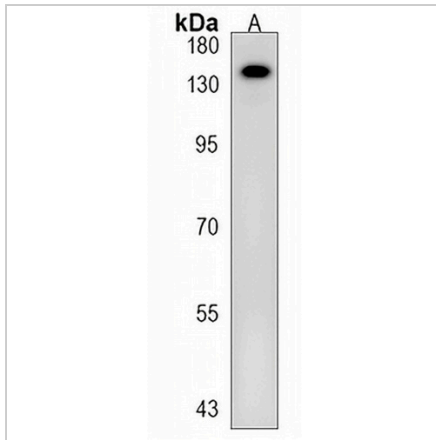
Description	Rabbit polyclonal antibody to PIGO
Specificity	Recognizes endogenous levels of PIGO protein.
Antibody Type	Primary antibody
Immunogen	KLH-conjugated synthetic peptide encompassing a sequence within the C-terminal region of human PIGO. The exact sequence is proprietary.
Purification	The antibody was purified by immunogen affinity chromatography.
Molecular Weight	Predicted: 118 kD; Observed: 135 kD
Form/Buffer	Liquid in 0.42% Potassium phosphate, 0.87% Sodium chloride, pH 7.3, 30% glycerol, and 0.01% sodium azide.
Alternative Names	GPI ethanolamine phosphate transferase 3; Phosphatidylinositol-glycan biosynthesis class O protein; PIG-O
Gene Symbol	PIGO
Entrez Gene	84720(Human)
SwissProt	Q8TEQ8(Human)

*AREX continuously optimizes our products. Webpage content may not reflect the latest updates. For inquiries, please contact info@arexbio.com or your local distributor.

*Clone Number, Reactivity, Source/Host and Clonality can be found in the product name and Key Features section above.

DATASHEET**PIGO Rabbit Polyclonal Antibody**

CAT. NO. APA18244

DATA

Western blot analysis of PIGO expression in Y79 (A) whole cell lysates. (Predicted band size: 118 kD; Observed band size: 135 kD)

STORAGE

Store at 4°C short term. For long term storage, store at -20°C, avoiding freeze/thaw cycles.

NOTE

For Research Use Only. Not for diagnostic, therapeutics, prophylactic or in vivo use.