

DATASHEET

CASPR4 Rabbit Polyclonal Antibody

CAT. NO. APA18246

KEY FEATURES

Target	CASPR4	Source / Host	Rabbit
Reactivity	Human	Clonality	Polyclonal
Applications	WB	Conjugation	Unconjugated
Form / Buffer	Liquid in 0.42% Potassium phosphate, 0.87% Sodium chloride, pH 7.3, 30% glycerol, and 0.01% sodium azide.		Storage at -20°C

BACKGROUND

Presynaptic protein involved in both dopaminergic synaptic transmission and GABAergic system, thereby participating in the structural maturation of inhibitory interneuron synapses. Involved in the dopaminergic synaptic transmission by attenuating dopamine release through a presynaptic mechanism. Also participates in the GABAergic system .

APPLICATION

To ensure optimal assay performance, AREX recommends conducting reagent titration tailored to each testing system for optimal detection results.

WB	1:500 - 1:1000
----	----------------

*Results are sample-specific. Please refer to your local assay conditions and test parameters for reference.

PRODUCT OVERVIEW

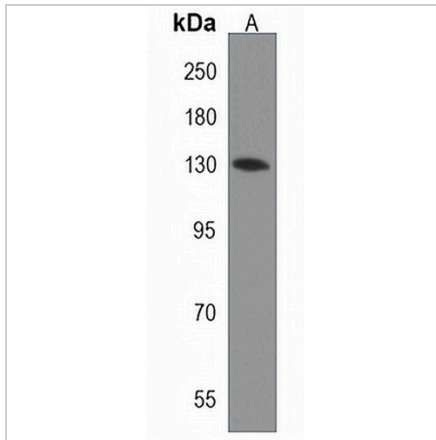
Description	Rabbit polyclonal antibody to CASPR4
Specificity	Recognizes endogenous levels of CASPR4 protein.
Antibody Type	Primary antibody
Immunogen	KLH-conjugated synthetic peptide encompassing a sequence within the C-terminal region of human CASPR4. The exact sequence is proprietary.
Purification	The antibody was purified by immunogen affinity chromatography.
Molecular Weight	Predicted: 145 kD; Observed: 130 kD
Form/Buffer	Liquid in 0.42% Potassium phosphate, 0.87% Sodium chloride, pH 7.3, 30% glycerol, and 0.01% sodium azide.
Alternative Names	CASPR4; KIAA1763; Contactin-associated protein-like 4; Cell recognition molecule Caspr4
Gene Symbol	CNTNAP4
Entrez Gene	85445(Human)
SwissProt	Q9C0A0(Human)

*AREX continuously optimizes our products. Webpage content may not reflect the latest updates. For inquiries, please contact info@arexbio.com or your local distributor.

*Clone Number, Reactivity, Source/Host and Clonality can be found in the product name and Key Features section above.

DATASHEET**CASPR4 Rabbit Polyclonal Antibody**

CAT. NO. APA18246

DATA

Western blot analysis of CASPR4 expression in MDAMB231 (A) whole cell lysates.
(Predicted band size: 145 kD; Observed band size: 130 kD)

STORAGE

Store at 4°C short term. For long term storage, store at -20°C, avoiding freeze/thaw cycles.

NOTE

For Research Use Only. Not for diagnostic, therapeutics, prophylactic or in vivo use.