

DATASHEET

IER5 Rabbit Polyclonal Antibody

CAT. NO. APA18252

KEY FEATURES

Target	IER5	Source / Host	Rabbit
Reactivity	Human	Clonality	Polyclonal
Applications	WB	Conjugation	Unconjugated
Form / Buffer	Liquid in 0.42% Potassium phosphate, 0.87% Sodium chloride, pH 7.3, 30% glycerol, and 0.01% sodium azide.		Storage at-20°C

BACKGROUND

Plays a role as a transcription factor . Mediates positive transcriptional regulation of several chaperone genes during the heat shock response in a HSF1-dependent manner . Mediates negative transcriptional regulation of CDC25B expression . Plays a role in the dephosphorylation of the heat shock factor HSF1 and ribosomal protein S6 kinase (S6K) by the protein phosphatase PP2A . Involved in the regulation of cell proliferation and resistance to thermal stress . Involved in the cell cycle checkpoint and survival in response to ionizing radiation . Associates with chromatin to the CDC25B promoter .

APPLICATION

To ensure optimal assay performance, AREX recommends conducting reagent titration tailored to each testing system for optimal detection results.

WB	1:500 - 1:1000
----	----------------

*Results are sample-specific. Please refer to your local assay conditions and test parameters for reference.

PRODUCT OVERVIEW

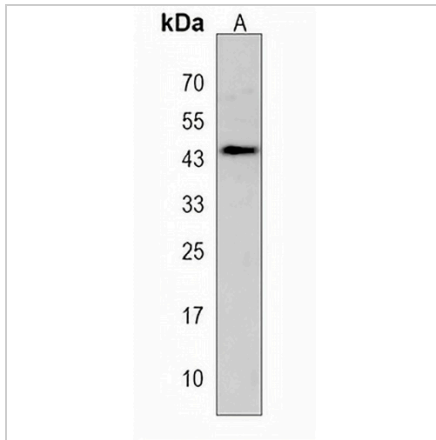
Description	Rabbit polyclonal antibody to IER5
Specificity	Recognizes endogenous levels of IER5 protein.
Antibody Type	Primary antibody
Immunogen	KLH-conjugated synthetic peptide encompassing a sequence within the Central region of human IER5. The exact sequence is proprietary.
Purification	The antibody was purified by immunogen affinity chromatography.
Molecular Weight	Predicted: 33 kD; Observed: 45 kD
Form/Buffer	Liquid in 0.42% Potassium phosphate, 0.87% Sodium chloride, pH 7.3, 30% glycerol, and 0.01% sodium azide.
Alternative Names	Immediate early response gene 5 protein
Gene Symbol	IER5
Entrez Gene	51278(Human)
SwissProt	Q5VY09(Human)

*AREX continuously optimizes our products. Webpage content may not reflect the latest updates. For inquiries, please contact info@arexbio.com or your local distributor.

*Clone Number, Reactivity, Source/Host and Clonality can be found in the product name and Key Features section above.

DATASHEET**IER5 Rabbit Polyclonal Antibody**

CAT. NO. APA18252

DATA

Western blot analysis of IER5 expression in MCF7 (A) whole cell lysates. (Predicted band size: 33 kD; Observed band size: 45 kD)

STORAGE

Store at 4°C short term. For long term storage, store at -20°C, avoiding freeze/thaw cycles.

NOTE

For Research Use Only. Not for diagnostic, therapeutics, prophylactic or in vivo use.