

DATASHEET

KCTD13 Rabbit Polyclonal Antibody

CAT. NO. APA18259

KEY FEATURES

Target	KCTD13	Source / Host	Rabbit
Reactivity	Human	Clonality	Polyclonal
Applications	WB	Conjugation	Unconjugated
Form / Buffer	Liquid in 0.42% Potassium phosphate, 0.87% Sodium chloride, pH 7.3, 30% glycerol, and 0.01% sodium azide.		Storage at -20°C

BACKGROUND

Substrate-specific adapter of a BCR (BTB-CUL3-RBX1) E3 ubiquitin-protein ligase complex required for synaptic transmission E3 ubiquitin-protein ligase complex required for synaptic transmission . The BCR(KCTD13) E3 ubiquitin ligase complex mediates the ubiquitination of RHOA, leading to its degradation by the proteasome Degradation of RHOA regulates the actin cytoskeleton and promotes synaptic transmission .

APPLICATION

To ensure optimal assay performance, AREX recommends conducting reagent titration tailored to each testing system for optimal detection results.

WB	1:500 - 1:1000
----	----------------

*Results are sample-specific. Please refer to your local assay conditions and test parameters for reference.

PRODUCT OVERVIEW

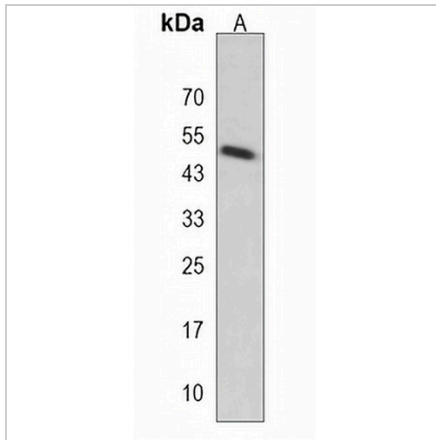
Description	Rabbit polyclonal antibody to KCTD13
Specificity	Recognizes endogenous levels of KCTD13 protein.
Antibody Type	Primary antibody
Immunogen	KLH-conjugated synthetic peptide encompassing a sequence within the C-terminal region of human KCTD13. The exact sequence is proprietary.
Purification	The antibody was purified by immunogen affinity chromatography.
Molecular Weight	Predicted: 36 kD; Observed: 50 kD
Form/Buffer	Liquid in 0.42% Potassium phosphate, 0.87% Sodium chloride, pH 7.3, 30% glycerol, and 0.01% sodium azide.
Alternative Names	BACURD1; PDIP1; POLDIP1; BTB/POZ domain-containing adapter for CUL3-mediated RhoA degradation protein 1; hBACURD1; BTB/POZ domain-containing protein KCTD13; Polymerase delta-interacting protein 1; TNFAIP1-like protein
Gene Symbol	KCTD13
Entrez Gene	253980(Human)
SwissProt	Q8WZ19(Human)

*AREX continuously optimizes our products. Webpage content may not reflect the latest updates. For inquiries, please contact info@arexbio.com or your local distributor.

*Clone Number, Reactivity, Source/Host and Clonality can be found in the product name and Key Features section above.

DATASHEET**KCTD13 Rabbit Polyclonal Antibody**

CAT. NO. APA18259

DATA

Western blot analysis of KCTD13 expression in rat testis (A) whole cell lysates. (Predicted band size: 36 kD; Observed band size: 50 kD)

STORAGE

Store at 4°C short term. For long term storage, store at -20°C, avoiding freeze/thaw cycles.

NOTE

For Research Use Only. Not for diagnostic, therapeutics, prophylactic or in vivo use.