

DATASHEET

CACFD1 Rabbit Polyclonal Antibody

CAT. NO. APA18262

KEY FEATURES

Target	CACFD1	Source / Host	Rabbit
Reactivity	Human, Mouse	Clonality	Polyclonal
Applications	WB	Conjugation	Unconjugated
Form / Buffer	Liquid in 0.42% Potassium phosphate, 0.87% Sodium chloride, pH 7.3, 30% glycerol, and 0.01% sodium azide.		Storage at -20°C

BACKGROUND

Transmembrane protein which mediates synaptic endocytosis and fitness-based cell culling . In response to different stimulus strengths, controls two major modes of synaptic vesicle (SV) retrieval in hippocampal neurons; Clathrin-mediated endocytosis (CME) in response to mild stimulation and activity-dependent bulk endocytosis (ADBE) in response to strong stimulation . In cytotoxic T-lymphocytes (CTLs) facilitates calcium-dependent endocytosis of cytotoxic granules at the immuno synapse . Different isoforms work as fitness fingerprints in 'loser' and 'winner' cells and thereby mediate win/lose decisions as part of the cell competition process .

APPLICATION

To ensure optimal assay performance, AREX recommends conducting reagent titration tailored to each testing system for optimal detection results.

WB	1:500 - 1:1000
----	----------------

*Results are sample-specific. Please refer to your local assay conditions and test parameters for reference.

PRODUCT OVERVIEW

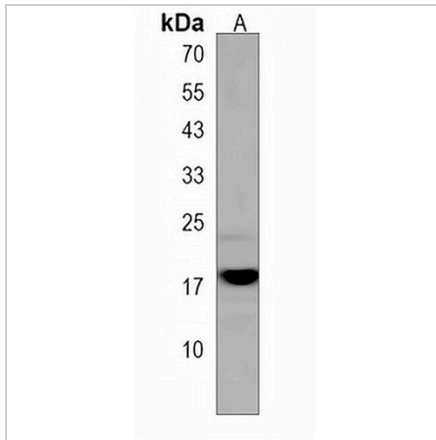
Description	Rabbit polyclonal antibody to CACFD1
Specificity	Recognizes endogenous levels of CACFD1 protein.
Antibody Type	Primary antibody
Immunogen	KLH-conjugated synthetic peptide encompassing a sequence within the C-terminal region of human CACFD1. The exact sequence is proprietary.
Purification	The antibody was purified by immunogen affinity chromatography.
Molecular Weight	Predicted: 18 kD; Observed: 18 kD
Form/Buffer	Liquid in 0.42% Potassium phosphate, 0.87% Sodium chloride, pH 7.3, 30% glycerol, and 0.01% sodium azide.
Alternative Names	C9orf7; Calcium channel flower homolog; Calcium channel flower domain-containing protein 1
Gene Symbol	CACFD1
Entrez Gene	11094(Human); 381356(Mouse)
SwissProt	Q9UGQ2(Human); Q8BG21(Mouse)

*AREX continuously optimizes our products. Webpage content may not reflect the latest updates. For inquiries, please contact info@arexbio.com or your local distributor.

*Clone Number, Reactivity, Source/Host and Clonality can be found in the product name and Key Features section above.

DATASHEET**CACFD1 Rabbit Polyclonal Antibody**

CAT. NO. APA18262

DATA

Western blot analysis of CACFD1 expression in mouse stomach (A) whole cell lysates.
(Predicted band size: 18 kD; Observed band size: 18 kD)

STORAGE

Store at 4°C short term. For long term storage, store at -20°C, avoiding freeze/thaw cycles.

NOTE

For Research Use Only. Not for diagnostic, therapeutics, prophylactic or in vivo use.