

**DATASHEET**

**EMP1 Rabbit Polyclonal Antibody**

CAT. NO. APA18264

**KEY FEATURES**

Target	EMP1	Source / Host	Rabbit
Reactivity	Human	Clonality	Polyclonal
Applications	WB	Conjugation	Unconjugated
Form / Buffer	Liquid in 0.42% Potassium phosphate, 0.87% Sodium chloride, pH 7.3, 30% glycerol, and 0.01% sodium azide.		Storage at -20°C

**BACKGROUND**

Epithelial membrane protein 1 (EMP1), also known as CL-20, Protein B4B, Tumor-associated membrane protein. Belongs to the PMP-22/EMP/MP20 family Subcellular location: Membrane

**APPLICATION**

To ensure optimal assay performance, AREX recommends conducting reagent titration tailored to each testing system for optimal detection results.

WB	1:500 - 1:1000
----	----------------

\*Results are sample-specific. Please refer to your local assay conditions and test parameters for reference.

**PRODUCT OVERVIEW**

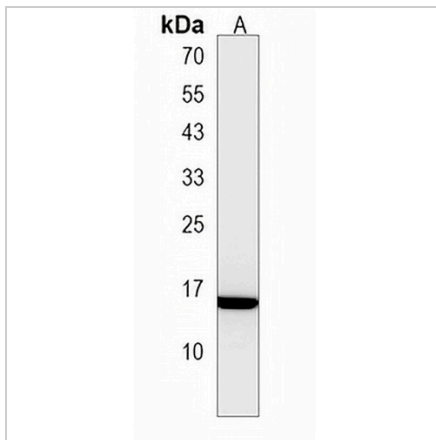
Description	Rabbit polyclonal antibody to EMP1
Specificity	Recognizes endogenous levels of EMP1 protein.
Antibody Type	Primary antibody
Immunogen	KLH-conjugated synthetic peptide encompassing a sequence within the N-terminal region of human EMP1. The exact sequence is proprietary.
Purification	The antibody was purified by immunogen affinity chromatography.
Molecular Weight	Predicted: 17 kD; Observed: 15 kD
Form/Buffer	Liquid in 0.42% Potassium phosphate, 0.87% Sodium chloride, pH 7.3, 30% glycerol, and 0.01% sodium azide.
Alternative Names	B4B; TMP; Epithelial membrane protein 1; EMP-1; CL-20; Protein B4B; Tumor-associated membrane protein
Gene Symbol	EMP1
Entrez Gene	2012(Human)
SwissProt	P54849(Human)

\*AREX continuously optimizes our products. Webpage content may not reflect the latest updates. For inquiries, please contact [info@arexbio.com](mailto:info@arexbio.com) or your local distributor.

\*Clone Number, Reactivity, Source/Host and Clonality can be found in the product name and Key Features section above.

**DATASHEET****EMP1 Rabbit Polyclonal Antibody**

CAT. NO. APA18264

**DATA**

Western blot analysis of EMP1 expression in human skeletal muscle (A) whole cell lysates.  
(Predicted band size: 17 kD; Observed band size: 15 kD)

**STORAGE**

Store at 4°C short term. For long term storage, store at -20°C, avoiding freeze/thaw cycles.

**NOTE**

For Research Use Only. Not for diagnostic, therapeutics, prophylactic or in vivo use.