

DATASHEET

ABLIM3 Rabbit Polyclonal Antibody

CAT. NO. APA18265

KEY FEATURES

Target	ABLIM3	Source / Host	Rabbit
Reactivity	Human	Clonality	Polyclonal
Applications	WB	Conjugation	Unconjugated
Form / Buffer	Liquid in 0.42% Potassium phosphate, 0.87% Sodium chloride, pH 7.3, 30% glycerol, and 0.01% sodium azide.		Storage at -20°C

BACKGROUND

May act as scaffold protein. May stimulate ABRA activity and ABRA-dependent SRF transcriptional activity.

APPLICATION

To ensure optimal assay performance, AREX recommends conducting reagent titration tailored to each testing system for optimal detection results.

WB	1:500 - 1:1000
----	----------------

*Results are sample-specific. Please refer to your local assay conditions and test parameters for reference.

PRODUCT OVERVIEW

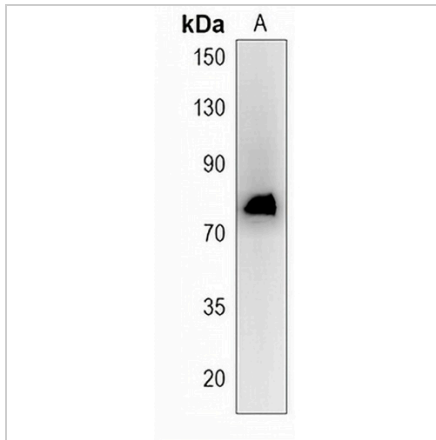
Description	Rabbit polyclonal antibody to ABLIM3
Specificity	Recognizes endogenous levels of ABLIM3 protein.
Antibody Type	Primary antibody
Immunogen	KLH-conjugated synthetic peptide encompassing a sequence within the C-terminal region of human ABLIM3. The exact sequence is proprietary.
Purification	The antibody was purified by immunogen affinity chromatography.
Molecular Weight	Predicted: 77 kD; Observed: 77 kD
Form/Buffer	Liquid in 0.42% Potassium phosphate, 0.87% Sodium chloride, pH 7.3, 30% glycerol, and 0.01% sodium azide.
Alternative Names	KIAA0843; Actin-binding LIM protein 3; abLIM-3; Actin-binding LIM protein family member 3
Gene Symbol	ABLIM3
Entrez Gene	22885(Human)
SwissProt	O94929(Human)

*AREX continuously optimizes our products. Webpage content may not reflect the latest updates. For inquiries, please contact info@arexbio.com or your local distributor.

*Clone Number, Reactivity, Source/Host and Clonality can be found in the product name and Key Features section above.

DATASHEET**ABLIM3 Rabbit Polyclonal Antibody**

CAT. NO. APA18265

DATA

Western blot analysis of ABLIM3 expression in CEM (A) whole cell lysates. (Predicted band size: 77 kD; Observed band size: 77 kD)

STORAGE

Store at 4°C short term. For long term storage, store at -20°C, avoiding freeze/thaw cycles.

NOTE

For Research Use Only. Not for diagnostic, therapeutics, prophylactic or in vivo use.