

**DATASHEET**

**MTRF1 Rabbit Polyclonal Antibody**

CAT. NO. APA18270

**KEY FEATURES**

|               |   |               |                     |
|---------------|---|---------------|---------------------|
| Target        | MTRF1   | Source / Host | Rabbit              |
| Reactivity    | Human   | Clonality     | Polyclonal          |
| Applications  | WB  | Conjugation   | Unconjugated        |
| Form / Buffer | Liquid in 0.42% Potassium phosphate, 0.87% Sodium chloride, pH 7.3, 30% glycerol, and 0.01% sodium azide. |               | Storage<br>at -20°C |

**BACKGROUND**

Mitochondrial peptide chain release factor that directs the termination of translation in response to the peptide chain non-canonical stop codons AGG and AGA . Non-canonical termination codons AGG and AGA are found at the end of MT-CO1/COX1 and MT-ND6/ND6 open reading frames, respectively . Recognizes non-canonical stop codons via a network of interactions between the codon, MTRF1 and the ribosomal RNA (rRNA): in contrast to other translation release factors, which identify the codon in the A-site via direct interactions of amino acid side chains with the bases, MTRF1 repositions the first 2 bases of the stop codon to use an intricate network of interactions that includes residues of the release factor, the rRNA of the small ribosomal subunit, as well as neighboring bases of the mRNA .

**APPLICATION**

To ensure optimal assay performance, AREX recommends conducting reagent titration tailored to each testing system for optimal detection results.

|    |                |
|----|----------------|
| WB | 1:500 - 1:1000 |
|----|----------------|

\*Results are sample-specific. Please refer to your local assay conditions and test parameters for reference.

**PRODUCT OVERVIEW**

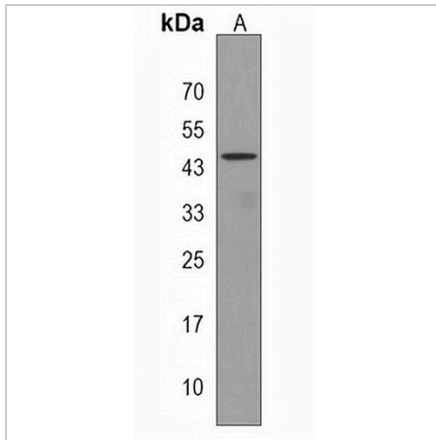
|                   |   |
|-------------------|---|
| Description       | Rabbit polyclonal antibody to MTRF1   |
| Specificity       | Recognizes endogenous levels of MTRF1 protein.  |
| Antibody Type     | Primary antibody  |
| Immunogen         | KLH-conjugated synthetic peptide encompassing a sequence within the Central region of human MTRF1. The exact sequence is proprietary. |
| Purification      | The antibody was purified by immunogen affinity chromatography.   |
| Molecular Weight  | Predicted: 52 kD; Observed: 45 kD   |
| Form/Buffer       | Liquid in 0.42% Potassium phosphate, 0.87% Sodium chloride, pH 7.3, 30% glycerol, and 0.01% sodium azide.                             |
| Alternative Names | Peptide chain release factor 1, mitochondrial; MRF-1; MtRF-1  |
| Gene Symbol       | MTRF1   |
| Entrez Gene       | 9617(Human)   |
| SwissProt         | O75570(Human)   |

\*AREX continuously optimizes our products. Webpage content may not reflect the latest updates. For inquiries, please contact [info@arexbio.com](mailto:info@arexbio.com) or your local distributor.

\*Clone Number, Reactivity, Source/Host and Clonality can be found in the product name and Key Features section above.

**DATASHEET****MTRF1 Rabbit Polyclonal Antibody**

CAT. NO. APA18270

**DATA**

Western blot analysis of MTRF1 expression in human lung (A) whole cell lysates.  
(Predicted band size: 52 kD; Observed band size: 45 kD)

**STORAGE**

Store at 4°C short term. For long term storage, store at -20°C, avoiding freeze/thaw cycles.

**NOTE**

For Research Use Only. Not for diagnostic, therapeutics, prophylactic or in vivo use.