

DATASHEET

PBLD Rabbit Polyclonal Antibody

CAT. NO. APA18272

KEY FEATURES

Target	PBLD	Source / Host	Rabbit
Reactivity	Human	Clonality	Polyclonal
Applications	WB	Conjugation	Unconjugated
Form / Buffer	Liquid in 0.42% Potassium phosphate, 0.87% Sodium chloride, pH 7.3, 30% glycerol, and 0.01% sodium azide.		Storage at -20°C

BACKGROUND

Functions as a positive regulator of the antiviral immune response by modulating innate immunity and viral replication by enhancing type I interferon (IFN-I) response . PBLD enhances IFN-I signaling via multiple pathways . Promotes IRF3-mediated IFN-I production and apoptosis, thereby inhibiting viral replication . Upregulates IFN-I response by activating the NF-kappaB signaling pathway, potentially through inhibition of TRIM21-mediated degradation of phosphorylated IKKbeta, thereby sustaining NF-kappaB activation to counteract viral infection . Additionally, promotes the p53-USP4-MAVS signaling axis by stabilizing MAVS through USP4-mediated deubiquitination, thereby enhancing the IFN-I response against RNA virus infection .

APPLICATION

To ensure optimal assay performance, AREX recommends conducting reagent titration tailored to each testing system for optimal detection results.

WB	1:500 - 1:1000
----	----------------

*Results are sample-specific. Please refer to your local assay conditions and test parameters for reference.

PRODUCT OVERVIEW

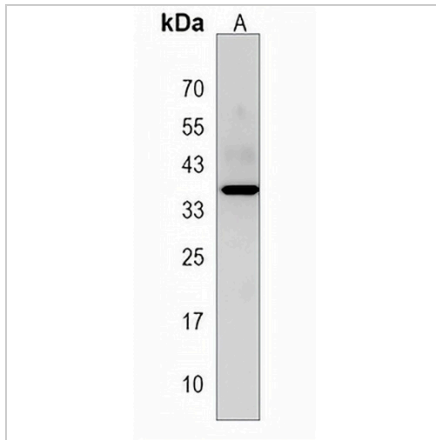
Description	Rabbit polyclonal antibody to PBLD
Specificity	Recognizes endogenous levels of PBLD protein.
Antibody Type	Primary antibody
Immunogen	KLH-conjugated synthetic peptide encompassing a sequence within the C-terminal region of human PBLD. The exact sequence is proprietary.
Purification	The antibody was purified by immunogen affinity chromatography.
Molecular Weight	Predicted: 31 kD; Observed: 35 kD
Form/Buffer	Liquid in 0.42% Potassium phosphate, 0.87% Sodium chloride, pH 7.3, 30% glycerol, and 0.01% sodium azide.
Alternative Names	MAWBP; Phenazine biosynthesis-like domain-containing protein; MAWD-binding protein; MAWDBP; Unknown protein 32 from 2D-page of liver tissue
Gene Symbol	PBLD
Entrez Gene	64081(Human)
SwissProt	P30039(Human)

*AREX continuously optimizes our products. Webpage content may not reflect the latest updates. For inquiries, please contact info@arexbio.com or your local distributor.

*Clone Number, Reactivity, Source/Host and Clonality can be found in the product name and Key Features section above.

DATASHEET**PBLD Rabbit Polyclonal Antibody**

CAT. NO. APA18272

DATA

Western blot analysis of PBLD expression in 293 (A) whole cell lysates. (Predicted band size: 31 kD; Observed band size: 35 kD)

STORAGE

Store at 4°C short term. For long term storage, store at -20°C, avoiding freeze/thaw cycles.

NOTE

For Research Use Only. Not for diagnostic, therapeutics, prophylactic or in vivo use.