

DATASHEET

Reticulon 2 Rabbit Polyclonal Antibody

CAT. NO. APA18274

KEY FEATURES

Target	Reticulon 2	Source / Host	Rabbit
Reactivity	Human	Clonality	Polyclonal
Applications	WB	Conjugation	Unconjugated
Form / Buffer	Liquid in 0.42% Potassium phosphate, 0.87% Sodium chloride, pH 7.3, 30% glycerol, and 0.01% sodium azide.		Storage at -20°C

BACKGROUND

Inhibits amyloid precursor protein processing, probably by blocking BACE1 activity . Enhances trafficking of the glutamate transporter SLC1A1/EAAC1 from the endoplasmic reticulum to the cell surface . Plays a role in the translocation of SLC2A4/GLUT4 from intracellular membranes to the cell membrane which facilitates the uptake of glucose into the cell .

APPLICATION

To ensure optimal assay performance, AREX recommends conducting reagent titration tailored to each testing system for optimal detection results.

WB	1:500 - 1:1000
----	----------------

*Results are sample-specific. Please refer to your local assay conditions and test parameters for reference.

PRODUCT OVERVIEW

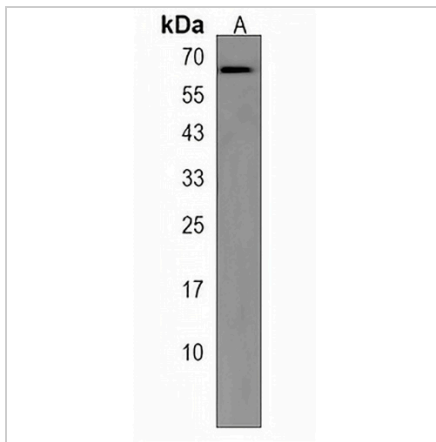
Description	Rabbit polyclonal antibody to Reticulon 2
Specificity	Recognizes endogenous levels of Reticulon 2 protein.
Antibody Type	Primary antibody
Immunogen	KLH-conjugated synthetic peptide encompassing a sequence within the N-terminal region of human Reticulon 2. The exact sequence is proprietary.
Purification	The antibody was purified by immunogen affinity chromatography.
Molecular Weight	Predicted: 59 kD; Observed: 63 kD
Form/Buffer	Liquid in 0.42% Potassium phosphate, 0.87% Sodium chloride, pH 7.3, 30% glycerol, and 0.01% sodium azide.
Alternative Names	NSPL1; Reticulon-2; Neuroendocrine-specific protein-like 1; NSP-like protein 1; Neuroendocrine-specific protein-like I; NSP-like protein I; NSPLI
Gene Symbol	RTN2
Entrez Gene	6253(Human)
SwissProt	O75298(Human)

*AREX continuously optimizes our products. Webpage content may not reflect the latest updates. For inquiries, please contact info@arexbio.com or your local distributor.

*Clone Number, Reactivity, Source/Host and Clonality can be found in the product name and Key Features section above.

DATASHEET**Reticulon 2 Rabbit Polyclonal Antibody**

CAT. NO. APA18274

DATA

Western blot analysis of Reticulon 2 expression in ZR751 (A) whole cell lysates. (Predicted band size: 59 kD; Observed band size: 63 kD)

STORAGE

Store at 4°C short term. For long term storage, store at -20°C, avoiding freeze/thaw cycles.

NOTE

For Research Use Only. Not for diagnostic, therapeutics, prophylactic or in vivo use.