

DATASHEET

CRLF3 Rabbit Polyclonal Antibody

CAT. NO. APA18279

KEY FEATURES

Target	CRLF3	Source / Host	Rabbit
Reactivity	Human	Clonality	Polyclonal
Applications	WB	Conjugation	Unconjugated
Form / Buffer	Liquid in 0.42% Potassium phosphate, 0.87% Sodium chloride, pH 7.3, 30% glycerol, and 0.01% sodium azide.		Storage at -20°C

BACKGROUND

May play a role in the negative regulation of cell cycle progression.

APPLICATION

To ensure optimal assay performance, AREX recommends conducting reagent titration tailored to each testing system for optimal detection results.

WB	1:500 - 1:1000
----	----------------

*Results are sample-specific. Please refer to your local assay conditions and test parameters for reference.

PRODUCT OVERVIEW

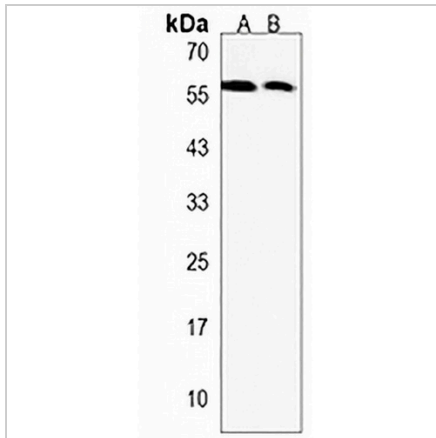
Description	Rabbit polyclonal antibody to CRLF3
Specificity	Recognizes endogenous levels of CRLF3 protein.
Antibody Type	Primary antibody
Immunogen	KLH-conjugated synthetic peptide encompassing a sequence within the C-terminal region of human CRLF3. The exact sequence is proprietary.
Purification	The antibody was purified by immunogen affinity chromatography.
Molecular Weight	Predicted: 49 kD; Observed: 58 kD
Form/Buffer	Liquid in 0.42% Potassium phosphate, 0.87% Sodium chloride, pH 7.3, 30% glycerol, and 0.01% sodium azide.
Alternative Names	CREME9; CRLM9; CYTOR4; P48; Cytokine receptor-like factor 3; Cytokine receptor-like molecule 9; CREME-9; Cytokine receptor-related protein 4; Type I cytokine receptor-like factor p48
Gene Symbol	CRLF3
Entrez Gene	51379(Human)
SwissProt	Q8IUI8(Human)

*AREX continuously optimizes our products. Webpage content may not reflect the latest updates. For inquiries, please contact info@arexbio.com or your local distributor.

*Clone Number, Reactivity, Source/Host and Clonality can be found in the product name and Key Features section above.

DATASHEET**CRLF3 Rabbit Polyclonal Antibody**

CAT. NO. APA18279

DATA

Western blot analysis of CRLF3 expression in HeLa (A), NCIH460 (B) whole cell lysates.
(Predicted band size: 49 kD; Observed band size: 58 kD)

STORAGE

Store at 4°C short term. For long term storage, store at -20°C, avoiding freeze/thaw cycles.

NOTE

For Research Use Only. Not for diagnostic, therapeutics, prophylactic or in vivo use.