

DATASHEET

ZC2HC1A Rabbit Polyclonal Antibody

CAT. NO. APA18281

KEY FEATURES

Target	ZC2HC1A	Source / Host	Rabbit
Reactivity	Human	Clonality	Polyclonal
Applications	WB	Conjugation	Unconjugated
Form / Buffer	Liquid in 0.42% Potassium phosphate, 0.87% Sodium chloride, pH 7.3, 30% glycerol, and 0.01% sodium azide.		Storage at -20°C

BACKGROUND

Zinc finger C2HC domain-containing protein 1A (ZC2HC1A). Belongs to the ZC2HC1 family

APPLICATION

To ensure optimal assay performance, AREX recommends conducting reagent titration tailored to each testing system for optimal detection results.

WB	1:500 - 1:1000
----	----------------

*Results are sample-specific. Please refer to your local assay conditions and test parameters for reference.

PRODUCT OVERVIEW

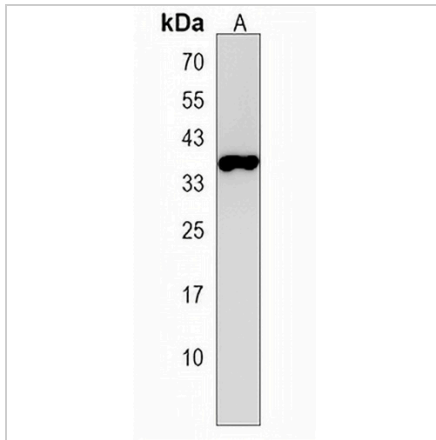
Description	Rabbit polyclonal antibody to ZC2HC1A
Specificity	Recognizes endogenous levels of ZC2HC1A protein.
Antibody Type	Primary antibody
Immunogen	KLH-conjugated synthetic peptide encompassing a sequence within the C-terminal region of human ZC2HC1A. The exact sequence is proprietary.
Purification	The antibody was purified by immunogen affinity chromatography.
Molecular Weight	Predicted: 35 kD; Observed: 35 kD
Form/Buffer	Liquid in 0.42% Potassium phosphate, 0.87% Sodium chloride, pH 7.3, 30% glycerol, and 0.01% sodium azide.
Alternative Names	C8orf70; FAM164A; Zinc finger C2HC domain-containing protein 1A
Gene Symbol	ZC2HC1A
Entrez Gene	51101(Human)
SwissProt	Q96GY0(Human)

*AREX continuously optimizes our products. Webpage content may not reflect the latest updates. For inquiries, please contact info@arexbio.com or your local distributor.

*Clone Number, Reactivity, Source/Host and Clonality can be found in the product name and Key Features section above.

DATASHEET**ZC2HC1A Rabbit Polyclonal Antibody**

CAT. NO. APA18281

DATA

Western blot analysis of ZC2HC1A expression in T47D (A) whole cell lysates. (Predicted band size: 35 kD; Observed band size: 35 kD)

STORAGE

Store at 4°C short term. For long term storage, store at -20°C, avoiding freeze/thaw cycles.

NOTE

For Research Use Only. Not for diagnostic, therapeutics, prophylactic or in vivo use.