

DATASHEET

KLHL2 Rabbit Polyclonal Antibody

CAT. NO. APA18286

KEY FEATURES

Target	KLHL2	Source / Host	Rabbit
Reactivity	Human	Clonality	Polyclonal
Applications	WB	Conjugation	Unconjugated
Form / Buffer	Liquid in 0.42% Potassium phosphate, 0.87% Sodium chloride, pH 7.3, 30% glycerol, and 0.01% sodium azide.		Storage at-20°C

BACKGROUND

Substrate-specific adapter of a BCR (BTB-CUL3-RBX1) E3 ubiquitin ligase complex that mediates the ubiquitination of target proteins, such as NPTXR, WNK1, WNK3 and WNK4, leading most often to their proteasomal degradation. E3 ubiquitin ligase complex that mediates the ubiquitination of target proteins, such as NPTXR, WNK1, WNK3 and WNK4, leading most often to their proteasomal degradation. The BCR(KLHL2) complex catalyzes ubiquitination and degradation of NPTXR. Responsible for degradative ubiquitination of the WNK kinases WNK1, WNK3 and WNK4. Plays a role in the reorganization of the actin cytoskeleton. Promotes growth of cell projections in oligodendrocyte precursors.

APPLICATION

To ensure optimal assay performance, AREX recommends conducting reagent titration tailored to each testing system for optimal detection results.

WB	1:500 - 1:1000
----	----------------

*Results are sample-specific. Please refer to your local assay conditions and test parameters for reference.

PRODUCT OVERVIEW

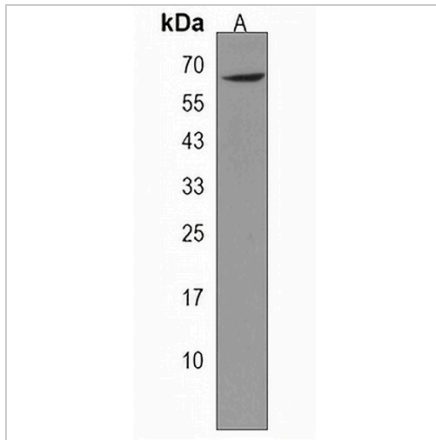
Description	Rabbit polyclonal antibody to KLHL2
Specificity	Recognizes endogenous levels of KLHL2 protein.
Antibody Type	Primary antibody
Immunogen	KLH-conjugated synthetic peptide encompassing a sequence within the N-terminal region of human KLHL2. The exact sequence is proprietary.
Purification	The antibody was purified by immunogen affinity chromatography.
Molecular Weight	Predicted: 65 kD; Observed: 63 kD
Form/Buffer	Liquid in 0.42% Potassium phosphate, 0.87% Sodium chloride, pH 7.3, 30% glycerol, and 0.01% sodium azide.
Alternative Names	Kelch-like protein 2; Actin-binding protein Mayven
Gene Symbol	KLHL2
Entrez Gene	11275(Human)
SwissProt	O95198(Human)

*AREX continuously optimizes our products. Webpage content may not reflect the latest updates. For inquiries, please contact info@arexbio.com or your local distributor.

*Clone Number, Reactivity, Source/Host and Clonality can be found in the product name and Key Features section above.

DATASHEET**KLHL2 Rabbit Polyclonal Antibody**

CAT. NO. APA18286

DATA

Western blot analysis of KLHL2 expression in 293 (A) whole cell lysates. (Predicted band size: 65 kD; Observed band size: 63 kD)

STORAGE

Store at 4°C short term. For long term storage, store at -20°C, avoiding freeze/thaw cycles.

NOTE

For Research Use Only. Not for diagnostic, therapeutics, prophylactic or in vivo use.