

**DATASHEET**

**CERS6 Rabbit Polyclonal Antibody**

CAT. NO. APA18303

**KEY FEATURES**

Target	CERS6	Source / Host	Rabbit
Reactivity	Human	Clonality	Polyclonal
Applications	WB	Conjugation	Unconjugated
Form / Buffer	Liquid in 0.42% Potassium phosphate, 0.87% Sodium chloride, pH 7.3, 30% glycerol, and 0.01% sodium azide.		Storage at -20°C

**BACKGROUND**

Ceramide synthase that catalyzes the transfer of the acyl chain from acyl-CoA to a sphingoid base, with high selectivity toward palmitoyl-CoA (hexadecanoyl-CoA; C16:0-CoA) . Can use other acyl donors, but with less efficiency . N-acylates sphinganine and sphingosine bases to form dihydroceramides and ceramides in de novo synthesis and salvage pathways, respectively . Ceramides generated by CERS6 play a role in inflammatory response . Acts as a regulator of metabolism and hepatic lipid accumulation . Under high fat diet, palmitoyl- (C16:0-) ceramides generated by CERS6 specifically bind the mitochondrial fission factor MFF, thereby promoting mitochondrial fragmentation and contributing to the development of obesity .

**APPLICATION**

To ensure optimal assay performance, AREX recommends conducting reagent titration tailored to each testing system for optimal detection results.

WB	1:500 - 1:1000
----	----------------

\*Results are sample-specific. Please refer to your local assay conditions and test parameters for reference.

**PRODUCT OVERVIEW**

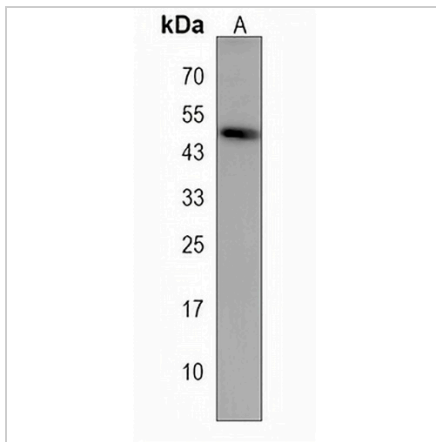
Description	Rabbit polyclonal antibody to CERS6
Specificity	Recognizes endogenous levels of CERS6 protein.
Antibody Type	Primary antibody
Immunogen	KLH-conjugated synthetic peptide encompassing a sequence within the C-terminal region of human CERS6. The exact sequence is proprietary.
Purification	The antibody was purified by immunogen affinity chromatography.
Molecular Weight	Predicted: 44 kD; Observed: 48 kD
Form/Buffer	Liquid in 0.42% Potassium phosphate, 0.87% Sodium chloride, pH 7.3, 30% glycerol, and 0.01% sodium azide.
Alternative Names	LASS6; Ceramide synthase 6; CerS6; LAG1 longevity assurance homolog 6
Gene Symbol	CERS6
Entrez Gene	253782(Human)
SwissProt	Q6ZMG9(Human)

\*AREX continuously optimizes our products. Webpage content may not reflect the latest updates. For inquiries, please contact [info@arexbio.com](mailto:info@arexbio.com) or your local distributor.

\*Clone Number, Reactivity, Source/Host and Clonality can be found in the product name and Key Features section above.

**DATASHEET****CERS6 Rabbit Polyclonal Antibody**

CAT. NO. APA18303

**DATA**

Western blot analysis of CERS6 expression in HeLa (A) whole cell lysates. (Predicted band size: 44 kD; Observed band size: 48 kD)

**STORAGE**

Store at 4°C short term. For long term storage, store at -20°C, avoiding freeze/thaw cycles.

**NOTE**

For Research Use Only. Not for diagnostic, therapeutics, prophylactic or in vivo use.