

**DATASHEET**

**PHF20L1 Rabbit Polyclonal Antibody**

CAT. NO. APA18309

**KEY FEATURES**

Target	PHF20L1	Source / Host	Rabbit
Reactivity	Human	Clonality	Polyclonal
Applications	WB	Conjugation	Unconjugated
Form / Buffer	Liquid in 0.42% Potassium phosphate, 0.87% Sodium chloride, pH 7.3, 30% glycerol, and 0.01% sodium azide.		Storage at -20°C

**BACKGROUND**

Is a negative regulator of proteasomal degradation of a set of methylated proteins, including DNMT1 and SOX2 . Involved in the maintainance of embryonic stem cells pluripotency, through the regulation of SOX2 levels .

**APPLICATION**

To ensure optimal assay performance, AREX recommends conducting reagent titration tailored to each testing system for optimal detection results.

WB	1:500 - 1:1000
----	----------------

\*Results are sample-specific. Please refer to your local assay conditions and test parameters for reference.

**PRODUCT OVERVIEW**

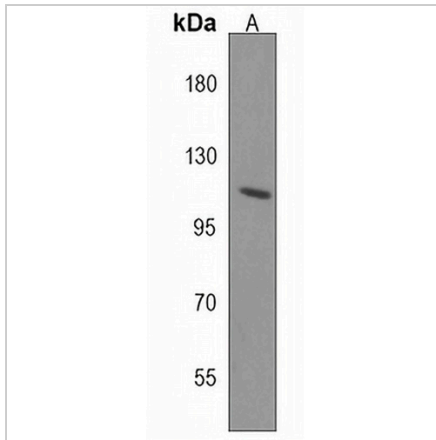
Description	Rabbit polyclonal antibody to PHF20L1
Specificity	Recognizes endogenous levels of PHF20L1 protein.
Antibody Type	Primary antibody
Immunogen	KLH-conjugated synthetic peptide encompassing a sequence within the C-terminal region of human PHF20L1. The exact sequence is proprietary.
Purification	The antibody was purified by immunogen affinity chromatography.
Molecular Weight	Predicted: 115 kD; Observed: 110 kD
Form/Buffer	Liquid in 0.42% Potassium phosphate, 0.87% Sodium chloride, pH 7.3, 30% glycerol, and 0.01% sodium azide.
Alternative Names	PHD finger protein 20-like protein 1
Gene Symbol	PHF20L1
Entrez Gene	51105(Human)
SwissProt	A8MW92(Human)

\*AREX continuously optimizes our products. Webpage content may not reflect the latest updates. For inquiries, please contact [info@arexbio.com](mailto:info@arexbio.com) or your local distributor.

\*Clone Number, Reactivity, Source/Host and Clonality can be found in the product name and Key Features section above.

**DATASHEET****PHF20L1 Rabbit Polyclonal Antibody**

CAT. NO. APA18309

**DATA**

Western blot analysis of PHF20L1 expression in A549 (A) whole cell lysates. (Predicted band size: 115 kD; Observed band size: 110 kD)

**STORAGE**

Store at 4°C short term. For long term storage, store at -20°C, avoiding freeze/thaw cycles.

**NOTE**

For Research Use Only. Not for diagnostic, therapeutics, prophylactic or in vivo use.