

DATASHEET

SLC36A3 Rabbit Polyclonal Antibody

CAT. NO. APA18310

KEY FEATURES

Target	SLC36A3	Source / Host	Rabbit
Reactivity	Human	Clonality	Polyclonal
Applications	WB	Conjugation	Unconjugated
Form / Buffer	Liquid in 0.42% Potassium phosphate, 0.87% Sodium chloride, pH 7.3, 30% glycerol, and 0.01% sodium azide.		Storage at -20°C

BACKGROUND

Proton-coupled amino acid transporter 3 (SLC36A3), also known as Solute carrier family 36 member 3, Tramdorin-2. Belongs to the amino acid/polyamine transporter 2 family Subcellular location: Membrane Tissue specificity: Specifically expressed in testis

APPLICATION

To ensure optimal assay performance, AREX recommends conducting reagent titration tailored to each testing system for optimal detection results.

WB	1:500 - 1:1000
----	----------------

*Results are sample-specific. Please refer to your local assay conditions and test parameters for reference.

PRODUCT OVERVIEW

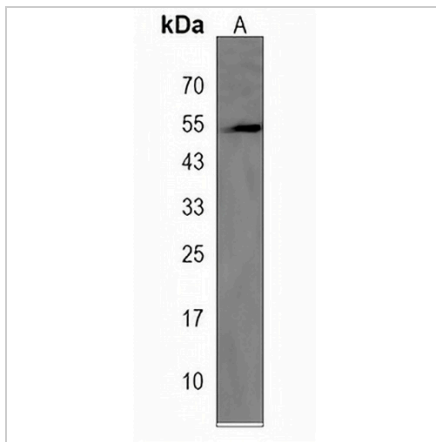
Description	Rabbit polyclonal antibody to SLC36A3
Specificity	Recognizes endogenous levels of SLC36A3 protein.
Antibody Type	Primary antibody
Immunogen	KLH-conjugated synthetic peptide encompassing a sequence within the N-terminal region of human SLC36A3. The exact sequence is proprietary.
Purification	The antibody was purified by immunogen affinity chromatography.
Molecular Weight	Predicted: 51 kD; Observed: 54 kD
Form/Buffer	Liquid in 0.42% Potassium phosphate, 0.87% Sodium chloride, pH 7.3, 30% glycerol, and 0.01% sodium azide.
Alternative Names	PAT3; TRAMD2; Proton-coupled amino acid transporter 3; Proton/amino acid transporter 3; Solute carrier family 36 member 3; Tramdorin-2
Gene Symbol	SLC36A3
Entrez Gene	285641(Human)
SwissProt	Q495N2(Human)

*AREX continuously optimizes our products. Webpage content may not reflect the latest updates. For inquiries, please contact info@arexbio.com or your local distributor.

*Clone Number, Reactivity, Source/Host and Clonality can be found in the product name and Key Features section above.

DATASHEET**SLC36A3 Rabbit Polyclonal Antibody**

CAT. NO. APA18310

DATA

Western blot analysis of SLC36A3 expression in SKBR3 (A) whole cell lysates. (Predicted band size: 51 kD; Observed band size: 54 kD)

STORAGE

Store at 4°C short term. For long term storage, store at -20°C, avoiding freeze/thaw cycles.

NOTE

For Research Use Only. Not for diagnostic, therapeutics, prophylactic or in vivo use.