

**DATASHEET**

**ZCCHC12 Rabbit Polyclonal Antibody**

CAT. NO. APA18314

**KEY FEATURES**

Target	ZCCHC12	Source / Host	Rabbit
Reactivity	Human	Clonality	Polyclonal
Applications	WB	Conjugation	Unconjugated
Form / Buffer	Liquid in 0.42% Potassium phosphate, 0.87% Sodium chloride, pH 7.3, 30% glycerol, and 0.01% sodium azide.		Storage at-20°C

**BACKGROUND**

Transcriptional coactivator in the bone morphogenetic protein (BMP)-signaling pathway. It positively modulates BMP signaling by interacting with SMAD1 and associating with CBP in the transcription complex. It contributes to the BMP-induced enhancement of cholinergic-neuron-specific gene expression .

**APPLICATION**

To ensure optimal assay performance, AREX recommends conducting reagent titration tailored to each testing system for optimal detection results.

WB	1:500 - 1:1000
----	----------------

\*Results are sample-specific. Please refer to your local assay conditions and test parameters for reference.

**PRODUCT OVERVIEW**

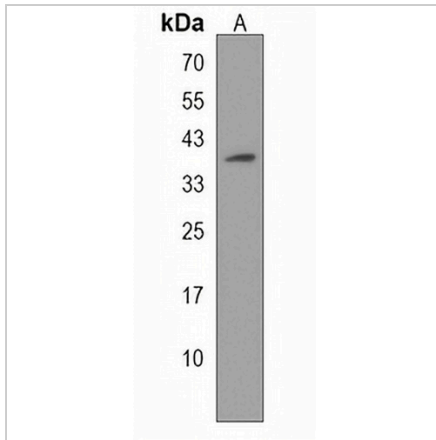
Description	Rabbit polyclonal antibody to ZCCHC12
Specificity	Recognizes endogenous levels of ZCCHC12 protein.
Antibody Type	Primary antibody
Immunogen	KLH-conjugated synthetic peptide encompassing a sequence within the C-terminal region of human ZCCHC12. The exact sequence is proprietary.
Purification	The antibody was purified by immunogen affinity chromatography.
Molecular Weight	Predicted: 45 kD; Observed: 38 kD
Form/Buffer	Liquid in 0.42% Potassium phosphate, 0.87% Sodium chloride, pH 7.3, 30% glycerol, and 0.01% sodium azide.
Alternative Names	SIZN1; Zinc finger CCHC domain-containing protein 12; Smad-interacting zinc finger protein 1
Gene Symbol	ZCCHC12
Entrez Gene	170261(Human)
SwissProt	Q6PEW1(Human)

\*AREX continuously optimizes our products. Webpage content may not reflect the latest updates. For inquiries, please contact [info@arexbio.com](mailto:info@arexbio.com) or your local distributor.

\*Clone Number, Reactivity, Source/Host and Clonality can be found in the product name and Key Features section above.

**DATASHEET****ZCCHC12 Rabbit Polyclonal Antibody**

CAT. NO. APA18314

**DATA**

Western blot analysis of ZCCHC12 expression in A549 (A) whole cell lysates. (Predicted band size: 45 kD; Observed band size: 38 kD)

**STORAGE**

Store at 4°C short term. For long term storage, store at -20°C, avoiding freeze/thaw cycles.

**NOTE**

For Research Use Only. Not for diagnostic, therapeutics, prophylactic or in vivo use.