

DATASHEET

LZIC Rabbit Polyclonal Antibody

CAT. NO. APA18317

KEY FEATURES

Target	LZIC	Source / Host	Rabbit
Reactivity	Human, Rat	Clonality	Polyclonal
Applications	WB, IF/ICC, FC	Conjugation	Unconjugated
Form / Buffer	Liquid in 0.42% Potassium phosphate, 0.87% Sodium chloride, pH 7.3, 30% glycerol, and 0.01% sodium azide.		Storage at -20°C

BACKGROUND

Protein LZIC (LZIC), also known as Leucine zipper and CTNNBIP1 domain-containing protein, Leucine zipper and ICAT homologous domain-containing protein. Belongs to the CTNNBIP1 family Subunit: Does not interact with CTNNB1 Tissue specificity: Ubiquitously expressed, with highest levels in kidney. Up-regulated in several cases of gastric cancers

APPLICATION

To ensure optimal assay performance, AREX recommends conducting reagent titration tailored to each testing system for optimal detection results.

WB	1:500 - 1:1000
IF/ICC	1:10 - 1:50
FC	1:10 - 1:30

*Results are sample-specific. Please refer to your local assay conditions and test parameters for reference.

PRODUCT OVERVIEW

Description	Rabbit polyclonal antibody to LZIC
Specificity	Recognizes endogenous levels of LZIC protein.
Antibody Type	Primary antibody
Immunogen	KLH-conjugated synthetic peptide encompassing a sequence within the Central region of human LZIC. The exact sequence is proprietary.
Purification	The antibody was purified by immunogen affinity chromatography.
Molecular Weight	Predicted: 21 kD; Observed: 21 kD
Form/Buffer	Liquid in 0.42% Potassium phosphate, 0.87% Sodium chloride, pH 7.3, 30% glycerol, and 0.01% sodium azide.
Alternative Names	Protein LZIC; Leucine zipper and CTNNBIP1 domain-containing protein; Leucine zipper and ICAT homologous domain-containing protein
Gene Symbol	LZIC
Entrez Gene	84328(Human); 366507(Rat)
SwissProt	Q8WZA0(Human); Q5PQN7(Rat)

*AREX continuously optimizes our products. Webpage content may not reflect the latest updates. For inquiries, please contact info@arexbio.com or your local distributor.

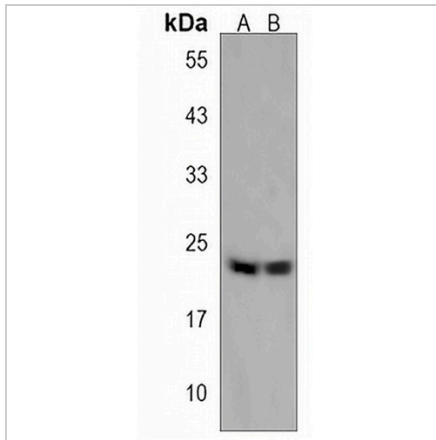
*Clone Number, Reactivity, Source/Host and Clonality can be found in the product name and Key Features section above.

DATASHEET

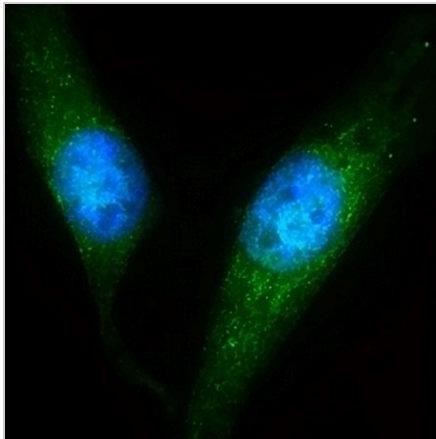
LZIC Rabbit Polyclonal Antibody

CAT. NO. APA18317

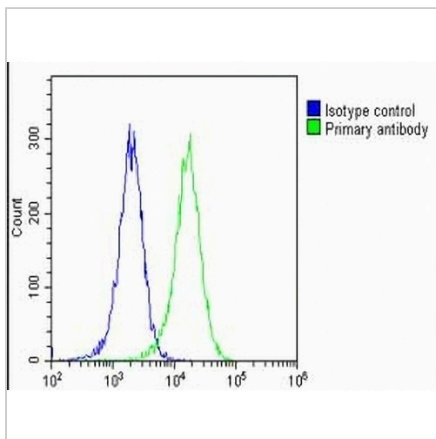
DATA



Western blot analysis of LZIC expression in K562 (A), PC12 (B) whole cell lysates. (Predicted band size: 21 kD; Observed band size: 21 kD)



Immunofluorescent analysis of Anti-LZIC staining in HeLa cells. Formalin-fixed cells were permeabilized with 0.1% Triton X-100 in TBS for 5-10 minutes and blocked with 3% BSA-PBS for 30 minutes at room temperature. Cells were probed with the primary antibody in 3% BSA-PBS and incubated overnight at 4 °C in a humidified chamber. Cells were washed with PBST and incubated with a AREX® Fluor 488 -conjugated secondary antibody (green) in PBS at room temperature in the dark. DAPI was used to stain the cell nuclei (blue).



Flow cytometric analysis of HeLa cells using Anti-LZIC Antibody. The cells were fixed with 2% paraformaldehyde (10 min) and then permeabilized with 90% methanol for 10 min. The cells were incubated in 2% bovine serum albumin to block non-specific protein-protein interactions followed by the antibody at 37 °C for 60 min. The secondary antibody Goat Anti-Rabbit IgG (H&L) - AREX® Fluor 488 was incubated at 37 °C for 40 min. Isotype control antibody (blue line) was used under the same condition.

STORAGE

Store at 4°C short term. For long term storage, store at -20°C, avoiding freeze/thaw cycles.

NOTE

For Research Use Only. Not for diagnostic, therapeutics, prophylactic or in vivo use.