

DATASHEET

SLC9B2 Rabbit Polyclonal Antibody

CAT. NO. APA18318

KEY FEATURES

Target	SLC9B2	Source / Host	Rabbit
Reactivity	Human	Clonality	Polyclonal
Applications	WB	Conjugation	Unconjugated
Form / Buffer	Liquid in 0.42% Potassium phosphate, 0.87% Sodium chloride, pH 7.3, 30% glycerol, and 0.01% sodium azide.		Storage at-20°C

BACKGROUND

Electroneutral Na(+)/Li(+)/H(+) antiporter that extrudes Na(+) or Li(+) in exchange for external protons across the membrane. Li(+)/H(+) antiporter that extrudes Na(+) or Li(+) in exchange for external protons across the membrane. Uses the proton gradient/membrane potential to extrude sodium. Contributes to the regulation of intracellular pH and sodium homeostasis. Also able to mediate Na(+)/Li(+) antiporter activity in kidney. May play a physiological role in renal tubular function and blood pressure homeostasis. Plays an important role for insulin secretion and clathrin-mediated endocytosis in beta-cells. Involved in sperm motility and fertility. It is controversial whether SLC9B2 plays a role in osteoclast differentiation or not.

APPLICATION

To ensure optimal assay performance, AREX recommends conducting reagent titration tailored to each testing system for optimal detection results.

WB	1:500 - 1:1000
----	----------------

*Results are sample-specific. Please refer to your local assay conditions and test parameters for reference.

PRODUCT OVERVIEW

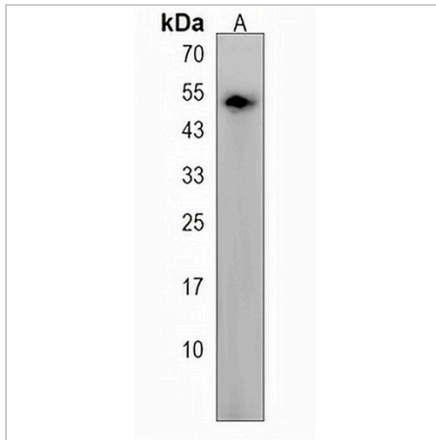
Description	Rabbit polyclonal antibody to SLC9B2
Specificity	Recognizes endogenous levels of SLC9B2 protein.
Antibody Type	Primary antibody
Immunogen	KLH-conjugated synthetic peptide encompassing a sequence within the C-terminal region of human SLC9B2. The exact sequence is proprietary.
Purification	The antibody was purified by immunogen affinity chromatography.
Molecular Weight	Predicted: 57 kD; Observed: 54 kD
Form/Buffer	Liquid in 0.42% Potassium phosphate, 0.87% Sodium chloride, pH 7.3, 30% glycerol, and 0.01% sodium azide.
Alternative Names	NHA2; NHEDC2; Mitochondrial sodium/hydrogen exchanger 9B2; Mitochondrial Na(+)/H(+) exchanger NHA2; Na(+)/H(+) exchanger-like domain-containing protein 2; NHE domain-containing protein 2; Sodium/hydrogen exchanger-like domain-containing protein 2; Solute carrier family 9 subfamily B member 2
Gene Symbol	SLC9B2
Entrez Gene	133308(Human)
SwissProt	Q86UD5(Human)

*AREX continuously optimizes our products. Webpage content may not reflect the latest updates. For inquiries, please contact info@arexbio.com or your local distributor.

*Clone Number, Reactivity, Source/Host and Clonality can be found in the product name and Key Features section above.

DATASHEET**SLC9B2 Rabbit Polyclonal Antibody**

CAT. NO. APA18318

DATA

Western blot analysis of SLC9B2 expression in A2058 (A) whole cell lysates. (Predicted band size: 57 kD; Observed band size: 54 kD)

STORAGE

Store at 4°C short term. For long term storage, store at -20°C, avoiding freeze/thaw cycles.

NOTE

For Research Use Only. Not for diagnostic, therapeutics, prophylactic or in vivo use.