

DATASHEET

NXNL1 Rabbit Polyclonal Antibody

CAT. NO. APA18319

KEY FEATURES

| | | | |
|---------------|---|---------------|---------------------|
| Target | NXNL1 | Source / Host | Rabbit |
| Reactivity | Human | Clonality | Polyclonal |
| Applications | WB | Conjugation | Unconjugated |
| Form / Buffer | Liquid in 0.42% Potassium phosphate, 0.87% Sodium chloride, pH 7.3, 30% glycerol, and 0.01% sodium azide. | | Storage at -20°C |

BACKGROUND

Thioredoxin-like protein that protects retinal rod and cone photoreceptors against oxidative stress and photo-oxidative damage. Plays a role in the inhibition of TAU phosphorylation and protects TAU against oxidative stress in the retina . Acts as a reducing system for MSRA, facilitating the repair of oxidized proteins such as alpha-crystallin (CRYAA/CRYAB) and cytochrome c (CYCS) in the lens during oxidative stress conditions and cytochrome c (CYCS) in the lens during oxidative stress conditions .

APPLICATION

To ensure optimal assay performance, AREX recommends conducting reagent titration tailored to each testing system for optimal detection results.

| | |
|----|----------------|
| WB | 1:500 - 1:1000 |
|----|----------------|

*Results are sample-specific. Please refer to your local assay conditions and test parameters for reference.

PRODUCT OVERVIEW

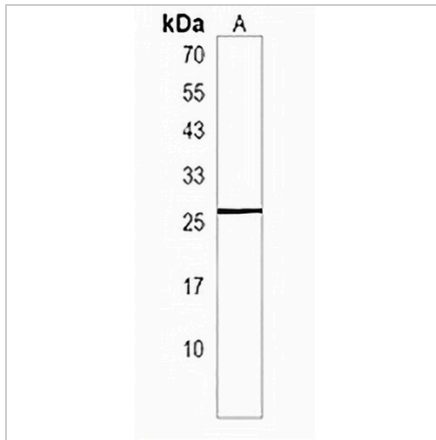
| | |
|-------------------|---|
| Description | Rabbit polyclonal antibody to NXNL1 |
| Specificity | Recognizes endogenous levels of NXNL1 protein. |
| Antibody Type | Primary antibody |
| Immunogen | KLH-conjugated synthetic peptide encompassing a sequence within the Central region of human NXNL1. The exact sequence is proprietary. |
| Purification | The antibody was purified by immunogen affinity chromatography. |
| Molecular Weight | Predicted: 23 kD; Observed: 27 kD |
| Form/Buffer | Liquid in 0.42% Potassium phosphate, 0.87% Sodium chloride, pH 7.3, 30% glycerol, and 0.01% sodium azide. |
| Alternative Names | TXNL6; Nucleoredoxin-like protein 1; Thioredoxin-like protein 6 |
| Gene Symbol | NXNL1 |
| Entrez Gene | 115861(Human) |
| SwissProt | Q96CM4(Human) |

*AREX continuously optimizes our products. Webpage content may not reflect the latest updates. For inquiries, please contact info@arexbio.com or your local distributor.

*Clone Number, Reactivity, Source/Host and Clonality can be found in the product name and Key Features section above.

DATASHEET**NXNL1 Rabbit Polyclonal Antibody**

CAT. NO. APA18319

DATA

Western blot analysis of NXNL1 expression in ZR751 (A) whole cell lysates. (Predicted band size: 23 kD; Observed band size: 27 kD)

STORAGE

Store at 4°C short term. For long term storage, store at -20°C, avoiding freeze/thaw cycles.

NOTE

For Research Use Only. Not for diagnostic, therapeutics, prophylactic or in vivo use.