

**DATASHEET**

**IGF2-AS Rabbit Polyclonal Antibody**

CAT. NO. APA18326

**KEY FEATURES**

Target	IGF2-AS	Source / Host	Rabbit
Reactivity	Human	Clonality	Polyclonal
Applications	WB	Conjugation	Unconjugated
Form / Buffer	Liquid in 0.42% Potassium phosphate, 0.87% Sodium chloride, pH 7.3, 30% glycerol, and 0.01% sodium azide.		Storage at-20°C

**BACKGROUND**

This gene is expressed in antisense to the insulin-like growth factor 2 (IGF2) gene and is imprinted and paternally expressed. It is thought to be non-coding because the putative protein is not conserved and translation is predicted to trigger nonsense mediated decay (NMD). Transcripts from this gene are produced in tumors and may function to suppress cell growth. Alternative splicing results in multiple transcript variants.

**APPLICATION**

To ensure optimal assay performance, AREX recommends conducting reagent titration tailored to each testing system for optimal detection results.

WB	1:500 - 1:1000
----	----------------

\*Results are sample-specific. Please refer to your local assay conditions and test parameters for reference.

**PRODUCT OVERVIEW**

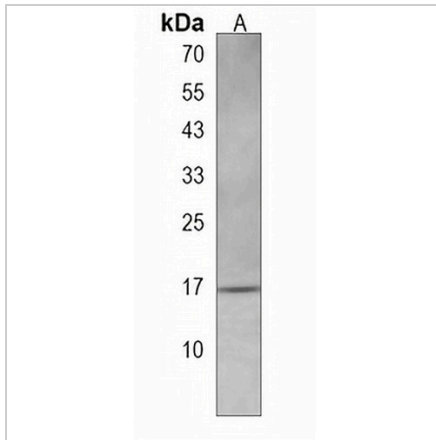
Description	Rabbit polyclonal antibody to IGF2-AS
Specificity	Recognizes endogenous levels of IGF2-AS protein.
Antibody Type	Primary antibody
Immunogen	KLH-conjugated synthetic peptide encompassing a sequence within the Central region of human IGF2-AS. The exact sequence is proprietary.
Purification	The antibody was purified by immunogen affinity chromatography.
Molecular Weight	Predicted: 18 kD; Observed: 17 kD
Form/Buffer	Liquid in 0.42% Potassium phosphate, 0.87% Sodium chloride, pH 7.3, 30% glycerol, and 0.01% sodium azide.
Alternative Names	IGF2-AS1; IGF2AS; Putative insulin-like growth factor 2 antisense gene protein; IGF2 antisense RNA 1; IGF2 antisense gene protein 1; PEG8/IGF2AS protein; Putative insulin-like growth factor 2 antisense gene protein 1; IGF2-AS1
Gene Symbol	IGF2-AS
Entrez Gene	51214(Human)
SwissProt	Q6U949(Human)

\*AREX continuously optimizes our products. Webpage content may not reflect the latest updates. For inquiries, please contact [info@arexbio.com](mailto:info@arexbio.com) or your local distributor.

\*Clone Number, Reactivity, Source/Host and Clonality can be found in the product name and Key Features section above.

**DATASHEET****IGF2-AS Rabbit Polyclonal Antibody**

CAT. NO. APA18326

**DATA**

Western blot analysis of IGF2-AS expression in T47D (A) whole cell lysates. (Predicted band size: 18 kD; Observed band size: 17 kD)

**STORAGE**

Store at 4°C short term. For long term storage, store at -20°C, avoiding freeze/thaw cycles.

**NOTE**

For Research Use Only. Not for diagnostic, therapeutics, prophylactic or in vivo use.