

DATASHEET

WDR20 Rabbit Polyclonal Antibody

CAT. NO. APA18330

KEY FEATURES

Target	WDR20	Source / Host	Rabbit
Reactivity	Human	Clonality	Polyclonal
Applications	WB	Conjugation	Unconjugated
Form / Buffer	Liquid in 0.42% Potassium phosphate, 0.87% Sodium chloride, pH 7.3, 30% glycerol, and 0.01% sodium azide.		Storage at -20°C

BACKGROUND

Regulator of deubiquitinating complexes. Activates deubiquitinating activity of complexes containing USP12 . Anchors at the base of the ubiquitin-contacting loop of USP12 and remotely modulates the catalytic center of the enzyme . Regulates shuttling of the USP12 deubiquitinase complex between the plasma membrane, cytoplasm and nucleus .

APPLICATION

To ensure optimal assay performance, AREX recommends conducting reagent titration tailored to each testing system for optimal detection results.

WB	1:500 - 1:1000
----	----------------

*Results are sample-specific. Please refer to your local assay conditions and test parameters for reference.

PRODUCT OVERVIEW

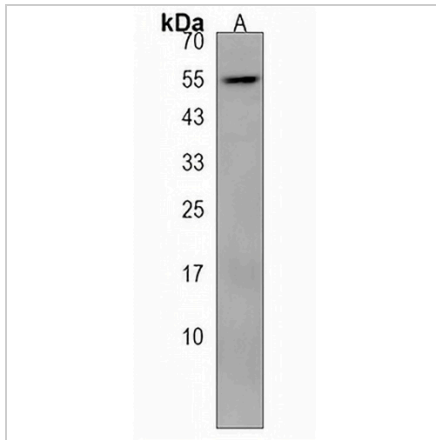
Description	Rabbit polyclonal antibody to WDR20
Specificity	Recognizes endogenous levels of WDR20 protein.
Antibody Type	Primary antibody
Immunogen	KLH-conjugated synthetic peptide encompassing a sequence within the N-terminal region of human WDR20. The exact sequence is proprietary.
Purification	The antibody was purified by immunogen affinity chromatography.
Molecular Weight	Predicted: 62 kD; Observed: 55 kD
Form/Buffer	Liquid in 0.42% Potassium phosphate, 0.87% Sodium chloride, pH 7.3, 30% glycerol, and 0.01% sodium azide.
Alternative Names	WD repeat-containing protein 20; Protein DMR
Gene Symbol	WDR20
Entrez Gene	91833(Human)
SwissProt	Q8TBZ3(Human)

*AREX continuously optimizes our products. Webpage content may not reflect the latest updates. For inquiries, please contact info@arexbio.com or your local distributor.

*Clone Number, Reactivity, Source/Host and Clonality can be found in the product name and Key Features section above.

DATASHEET**WDR20 Rabbit Polyclonal Antibody**

CAT. NO. APA18330

DATA

Western blot analysis of WDR20 expression in MCF7 (A) whole cell lysates. (Predicted band size: 62 kD; Observed band size: 55 kD)

STORAGE

Store at 4°C short term. For long term storage, store at -20°C, avoiding freeze/thaw cycles.

NOTE

For Research Use Only. Not for diagnostic, therapeutics, prophylactic or in vivo use.