

## DATASHEET

# RQCD1 Rabbit Polyclonal Antibody

CAT. NO. APA18333

### KEY FEATURES

|               |   |               |                     |
|---------------|---|---------------|---------------------|
| Target        | RQCD1   | Source / Host | Rabbit              |
| Reactivity    | Human   | Clonality     | Polyclonal          |
| Applications  | WB  | Conjugation   | Unconjugated        |
| Form / Buffer | Liquid in 0.42% Potassium phosphate, 0.87% Sodium chloride, pH 7.3, 30% glycerol, and 0.01% sodium azide. |               | Storage<br>at -20°C |

### BACKGROUND

Component of the CCR4-NOT complex which is one of the major cellular mRNA deadenylases and is linked to various cellular processes including bulk mRNA degradation, miRNA-mediated repression, translational repression during translational initiation and general transcription regulation. Additional complex functions may be a consequence of its influence on mRNA expression. Involved in down-regulation of MYB- and JUN-dependent transcription. May play a role in cell differentiation. Can bind oligonucleotides, such as poly-G, poly-C or poly-T (in vitro), but the physiological relevance of this is not certain. Does not bind poly-A.

### APPLICATION

To ensure optimal assay performance, AREX recommends conducting reagent titration tailored to each testing system for optimal detection results.

|    |                |
|----|----------------|
| WB | 1:500 - 1:1000 |
|----|----------------|

\*Results are sample-specific. Please refer to your local assay conditions and test parameters for reference.

### PRODUCT OVERVIEW

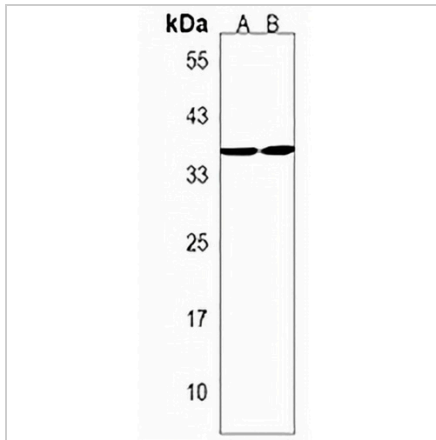
|                   |   |
|-------------------|---|
| Description       | Rabbit polyclonal antibody to RQCD1   |
| Specificity       | Recognizes endogenous levels of RQCD1 protein.  |
| Antibody Type     | Primary antibody  |
| Immunogen         | KLH-conjugated synthetic peptide encompassing a sequence within the Central region of human RQCD1. The exact sequence is proprietary. |
| Purification      | The antibody was purified by immunogen affinity chromatography.   |
| Molecular Weight  | Predicted: 33 kD; Observed: 36 kD   |
| Form/Buffer       | Liquid in 0.42% Potassium phosphate, 0.87% Sodium chloride, pH 7.3, 30% glycerol, and 0.01% sodium azide.                             |
| Alternative Names | CNOT9; RCD1; Cell differentiation protein RCD1 homolog; Rcd-1; CCR4-NOT transcription complex subunit 9                               |
| Gene Symbol       | RQCD1   |
| Entrez Gene       | 9125(Human)   |
| SwissProt         | Q92600(Human)   |

\*AREX continuously optimizes our products. Webpage content may not reflect the latest updates. For inquiries, please contact [info@arexbio.com](mailto:info@arexbio.com) or your local distributor.

\*Clone Number, Reactivity, Source/Host and Clonality can be found in the product name and Key Features section above.

**DATASHEET****RQCD1 Rabbit Polyclonal Antibody**

CAT. NO. APA18333

**DATA**

Western blot analysis of RQCD1 expression in HL60 (A), MOLT4 (B) whole cell lysates. (Predicted band size: 33 kD; Observed band size: 36 kD)

**STORAGE**

Store at 4°C short term. For long term storage, store at -20°C, avoiding freeze/thaw cycles.

**NOTE**

For Research Use Only. Not for diagnostic, therapeutics, prophylactic or in vivo use.