

DATASHEET

ZNF280B Rabbit Polyclonal Antibody

CAT. NO. APA18336

KEY FEATURES

Target	ZNF280B	Source / Host	Rabbit
Reactivity	Human	Clonality	Polyclonal
Applications	WB	Conjugation	Unconjugated
Form / Buffer	Liquid in 0.42% Potassium phosphate, 0.87% Sodium chloride, pH 7.3, 30% glycerol, and 0.01% sodium azide.		Storage at-20°C

BACKGROUND

May function as a transcription factor.

APPLICATION

To ensure optimal assay performance, AREX recommends conducting reagent titration tailored to each testing system for optimal detection results.

WB	1:500 - 1:1000
----	----------------

*Results are sample-specific. Please refer to your local assay conditions and test parameters for reference.

PRODUCT OVERVIEW

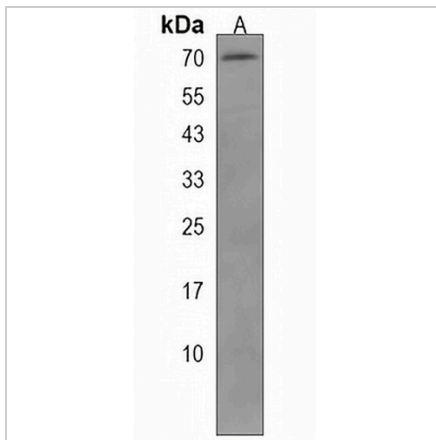
Description	Rabbit polyclonal antibody to ZNF280B
Specificity	Recognizes endogenous levels of ZNF280B protein.
Antibody Type	Primary antibody
Immunogen	KLH-conjugated synthetic peptide encompassing a sequence within the N-terminal region of human ZNF280B. The exact sequence is proprietary.
Purification	The antibody was purified by immunogen affinity chromatography.
Molecular Weight	Predicted: 61 kD; Observed: 70 kD
Form/Buffer	Liquid in 0.42% Potassium phosphate, 0.87% Sodium chloride, pH 7.3, 30% glycerol, and 0.01% sodium azide.
Alternative Names	SUHW2; ZNF279; ZNF632; Zinc finger protein 280B; 5'OY11.1; Suppressor of hairy wing homolog 2; Zinc finger protein 279; Zinc finger protein 632
Gene Symbol	ZNF280B
Entrez Gene	140883(Human)
SwissProt	Q86YH2(Human)

*AREX continuously optimizes our products. Webpage content may not reflect the latest updates. For inquiries, please contact info@arexbio.com or your local distributor.

*Clone Number, Reactivity, Source/Host and Clonality can be found in the product name and Key Features section above.

DATASHEET**ZNF280B Rabbit Polyclonal Antibody**

CAT. NO. APA18336

DATA

Western blot analysis of ZNF280B expression in HeLa (A) whole cell lysates. (Predicted band size: 61 kD; Observed band size: 70 kD)

STORAGE

Store at 4°C short term. For long term storage, store at -20°C, avoiding freeze/thaw cycles.

NOTE

For Research Use Only. Not for diagnostic, therapeutics, prophylactic or in vivo use.