

DATASHEET

CECR6 Rabbit Polyclonal Antibody

CAT. NO. APA18341

KEY FEATURES

Target	CECR6	Source / Host	Rabbit
Reactivity	Human, Mouse	Clonality	Polyclonal
Applications	WB	Conjugation	Unconjugated
Form / Buffer	Liquid in 0.42% Potassium phosphate, 0.87% Sodium chloride, pH 7.3, 30% glycerol, and 0.01% sodium azide.		Storage at -20°C

BACKGROUND

transmembrane protein 121B. Also known as: transmembrane protein 121B; cat eye syndrome chromosome region, candidate 6; cat eye syndrome critical region protein 6.

APPLICATION

To ensure optimal assay performance, AREX recommends conducting reagent titration tailored to each testing system for optimal detection results.

WB	1:500 - 1:1000
----	----------------

*Results are sample-specific. Please refer to your local assay conditions and test parameters for reference.

PRODUCT OVERVIEW

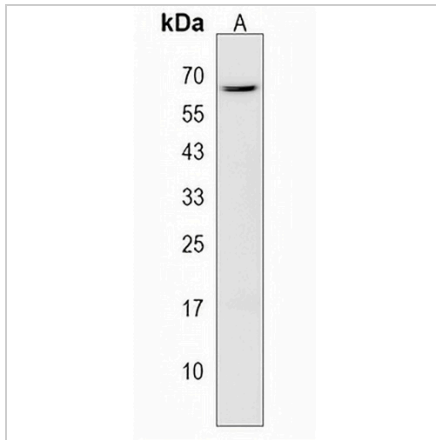
Description	Rabbit polyclonal antibody to CECR6
Specificity	Recognizes endogenous levels of CECR6 protein.
Antibody Type	Primary antibody
Immunogen	KLH-conjugated synthetic peptide encompassing a sequence within the C-terminal region of human CECR6. The exact sequence is proprietary.
Purification	The antibody was purified by immunogen affinity chromatography.
Molecular Weight	Predicted: 58 kD; Observed: 65 kD
Form/Buffer	Liquid in 0.42% Potassium phosphate, 0.87% Sodium chloride, pH 7.3, 30% glycerol, and 0.01% sodium azide.
Alternative Names	Cat eye syndrome critical region protein 6
Gene Symbol	CECR6
Entrez Gene	27439(Human); 94047(Mouse)
SwissProt	Q9BXQ6(Human); Q99MX7(Mouse)

*AREX continuously optimizes our products. Webpage content may not reflect the latest updates. For inquiries, please contact info@arexbio.com or your local distributor.

*Clone Number, Reactivity, Source/Host and Clonality can be found in the product name and Key Features section above.

DATASHEET**CECR6 Rabbit Polyclonal Antibody**

CAT. NO. APA18341

DATA

Western blot analysis of CECR6 expression in mouse bladder (A) whole cell lysates.
(Predicted band size: 58 kD; Observed band size: 65 kD)

STORAGE

Store at 4°C short term. For long term storage, store at -20°C, avoiding freeze/thaw cycles.

NOTE

For Research Use Only. Not for diagnostic, therapeutics, prophylactic or in vivo use.