

DATASHEET

PROSER1 Rabbit Polyclonal Antibody

CAT. NO. APA18342

KEY FEATURES

Target	PROSER1	Source / Host	Rabbit
Reactivity	Human, Mouse	Clonality	Polyclonal
Applications	WB	Conjugation	Unconjugated
Form / Buffer	Liquid in 0.42% Potassium phosphate, 0.87% Sodium chloride, pH 7.3, 30% glycerol, and 0.01% sodium azide.		Storage at-20°C

BACKGROUND

Mediates OGT interaction with and O-GlcNAcylation of TET2 to control TET2 stabilization at enhancers and CpG islands (CGIs).

APPLICATION

To ensure optimal assay performance, AREX recommends conducting reagent titration tailored to each testing system for optimal detection results.

WB	1:500 - 1:1000
----	----------------

*Results are sample-specific. Please refer to your local assay conditions and test parameters for reference.

PRODUCT OVERVIEW

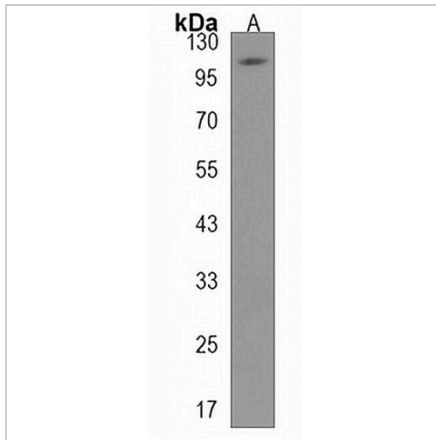
Description	Rabbit polyclonal antibody to PROSER1
Specificity	Recognizes endogenous levels of PROSER1 protein.
Antibody Type	Primary antibody
Immunogen	KLH-conjugated synthetic peptide encompassing a sequence within the N-terminal region of human PROSER1. The exact sequence is proprietary.
Purification	The antibody was purified by immunogen affinity chromatography.
Molecular Weight	Predicted: 95 kD; Observed: 108 kD
Form/Buffer	Liquid in 0.42% Potassium phosphate, 0.87% Sodium chloride, pH 7.3, 30% glycerol, and 0.01% sodium azide.
Alternative Names	C13orf23; KIAA2032; Proline and serine-rich protein 1
Gene Symbol	PROSER1
Entrez Gene	80209(Human); 212127(Mouse)
SwissProt	Q86XN7(Human); Q5PRE5(Mouse)

*AREX continuously optimizes our products. Webpage content may not reflect the latest updates. For inquiries, please contact info@arexbio.com or your local distributor.

*Clone Number, Reactivity, Source/Host and Clonality can be found in the product name and Key Features section above.

DATASHEET**PROSER1 Rabbit Polyclonal Antibody**

CAT. NO. APA18342

DATA

Western blot analysis of PROSER1 expression in HepG2 (A) whole cell lysates. (Predicted band size: 95 kD; Observed band size: 108 kD)

STORAGE

Store at 4°C short term. For long term storage, store at -20°C, avoiding freeze/thaw cycles.

NOTE

For Research Use Only. Not for diagnostic, therapeutics, prophylactic or in vivo use.