

**DATASHEET**

**CCDC91 Rabbit Polyclonal Antibody**

CAT. NO. APA18345

**KEY FEATURES**

|               |   |               |                    |
|---------------|---|---------------|--------------------|
| Target        | CCDC91  | Source / Host | Rabbit             |
| Reactivity    | Human, Mouse  | Clonality     | Polyclonal         |
| Applications  | WB  | Conjugation   | Unconjugated       |
| Form / Buffer | Liquid in 0.42% Potassium phosphate, 0.87% Sodium chloride, pH 7.3, 30% glycerol, and 0.01% sodium azide. |               | Storage<br>at-20°C |

**BACKGROUND**

Involved in the regulation of membrane traffic through the trans-Golgi network (TGN). Functions in close cooperation with the GGAs in the sorting of hydrolases to lysosomes.

**APPLICATION**

To ensure optimal assay performance, AREX recommends conducting reagent titration tailored to each testing system for optimal detection results.

|    |                |
|----|----------------|
| WB | 1:500 - 1:1000 |
|----|----------------|

\*Results are sample-specific. Please refer to your local assay conditions and test parameters for reference.

**PRODUCT OVERVIEW**

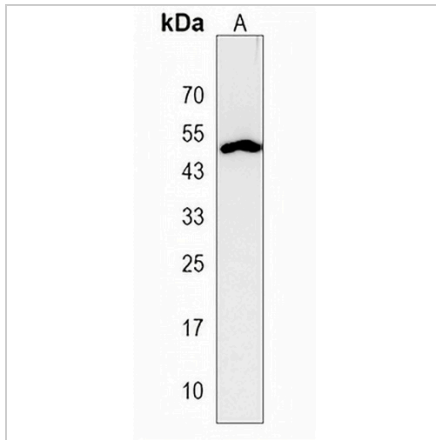
|                   |   |
|-------------------|---|
| Description       | Rabbit polyclonal antibody to CCDC91  |
| Specificity       | Recognizes endogenous levels of CCDC91 protein.   |
| Antibody Type     | Primary antibody  |
| Immunogen         | KLH-conjugated synthetic peptide encompassing a sequence within the C-terminal region of human CCDC91. The exact sequence is proprietary. |
| Purification      | The antibody was purified by immunogen affinity chromatography.   |
| Molecular Weight  | Predicted: 49 kD; Observed: 49 kD   |
| Form/Buffer       | Liquid in 0.42% Potassium phosphate, 0.87% Sodium chloride, pH 7.3, 30% glycerol, and 0.01% sodium azide.                                 |
| Alternative Names | GGABP; Coiled-coil domain-containing protein 91; GGA-binding partner; p56 accessory protein   |
| Gene Symbol       | CCDC91  |
| Entrez Gene       | 55297(Human); 67015(Mouse)  |
| SwissProt         | Q7Z6B0(Human); Q9D8L5(Mouse)  |

\*AREX continuously optimizes our products. Webpage content may not reflect the latest updates. For inquiries, please contact [info@arexbio.com](mailto:info@arexbio.com) or your local distributor.

\*Clone Number, Reactivity, Source/Host and Clonality can be found in the product name and Key Features section above.

**DATASHEET****CCDC91 Rabbit Polyclonal Antibody**

CAT. NO. APA18345

**DATA**

Western blot analysis of CCDC91 expression in mouse kidney (A) whole cell lysates.  
(Predicted band size: 49 kD; Observed band size: 49 kD)

**STORAGE**

Store at 4°C short term. For long term storage, store at -20°C, avoiding freeze/thaw cycles.

**NOTE**

For Research Use Only. Not for diagnostic, therapeutics, prophylactic or in vivo use.