

**DATASHEET**

**GPR88 Rabbit Polyclonal Antibody**

CAT. NO. APA18350

**KEY FEATURES**

Target	GPR88	Source / Host	Rabbit
Reactivity	Human	Clonality	Polyclonal
Applications	WB	Conjugation	Unconjugated
Form / Buffer	Liquid in 0.42% Potassium phosphate, 0.87% Sodium chloride, pH 7.3, 30% glycerol, and 0.01% sodium azide.		Storage at -20°C

**BACKGROUND**

Orphan G protein-coupled receptor implicated in a large repertoire of behavioral responses that engage motor activities, spatial learning, and emotional processing . May play a role in the regulation of cognitive and motor function . Couples with the heterotrimeric G protein complex of the G(i) subfamily, consisting of GNAI1, GNB1 and GNG2, thereby acting through a G(i)-mediated pathway subfamily, consisting of GNAI1, GNB1 and GNG2, thereby acting through a G(i)-mediated pathway . Plays a role in the attenuation of D1 dopamine receptor (D1R)-mediated cAMP response in ciliated cells . In non-ciliated cells, involved in the inhibition of the beta-2 adrenergic receptor (B2AR) response .

**APPLICATION**

To ensure optimal assay performance, AREX recommends conducting reagent titration tailored to each testing system for optimal detection results.

WB	1:500 - 1:1000
----	----------------

\*Results are sample-specific. Please refer to your local assay conditions and test parameters for reference.

**PRODUCT OVERVIEW**

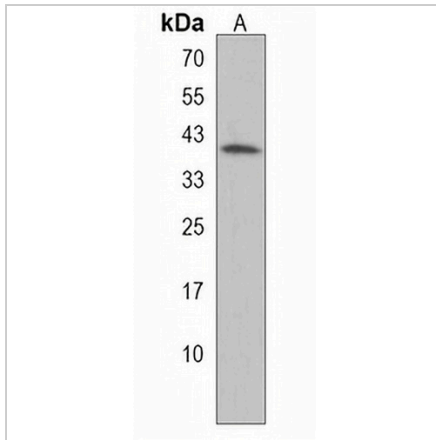
Description	Rabbit polyclonal antibody to GPR88
Specificity	Recognizes endogenous levels of GPR88 protein.
Antibody Type	Primary antibody
Immunogen	KLH-conjugated synthetic peptide encompassing a sequence within the C-terminal region of human GPR88. The exact sequence is proprietary.
Purification	The antibody was purified by immunogen affinity chromatography.
Molecular Weight	Predicted: 40 kD; Observed: 40 kD
Form/Buffer	Liquid in 0.42% Potassium phosphate, 0.87% Sodium chloride, pH 7.3, 30% glycerol, and 0.01% sodium azide.
Alternative Names	STRG; Probable G-protein coupled receptor 88; Striatum-specific G-protein coupled receptor
Gene Symbol	GPR88
Entrez Gene	54112(Human)
SwissProt	Q9GZN0(Human)

\*AREX continuously optimizes our products. Webpage content may not reflect the latest updates. For inquiries, please contact [info@arexbio.com](mailto:info@arexbio.com) or your local distributor.

\*Clone Number, Reactivity, Source/Host and Clonality can be found in the product name and Key Features section above.

**DATASHEET****GPR88 Rabbit Polyclonal Antibody**

CAT. NO. APA18350

**DATA**

Western blot analysis of GPR88 expression in HL60 (A) whole cell lysates. (Predicted band size: 40 kD; Observed band size: 40 kD)

**STORAGE**

Store at 4°C short term. For long term storage, store at -20°C, avoiding freeze/thaw cycles.

**NOTE**

For Research Use Only. Not for diagnostic, therapeutics, prophylactic or in vivo use.